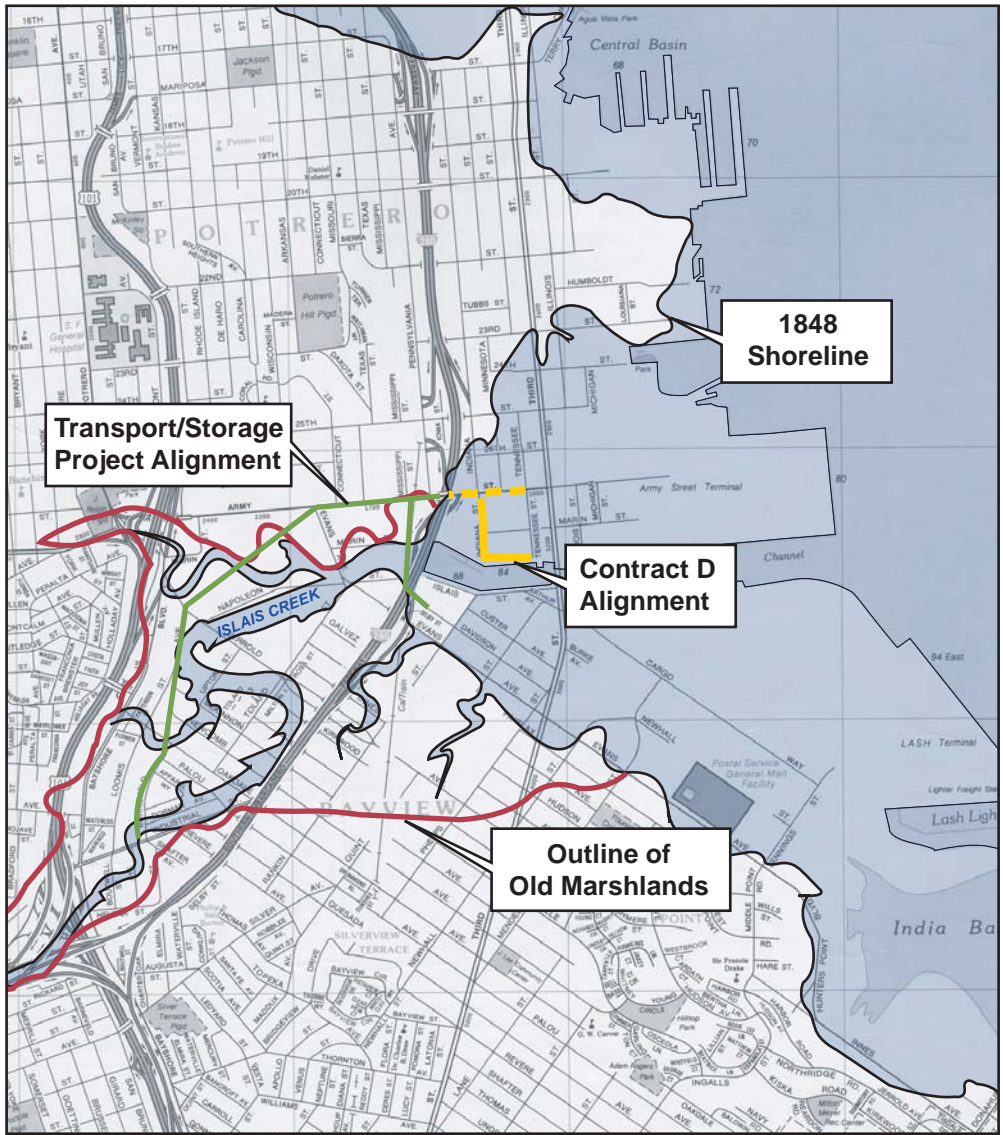
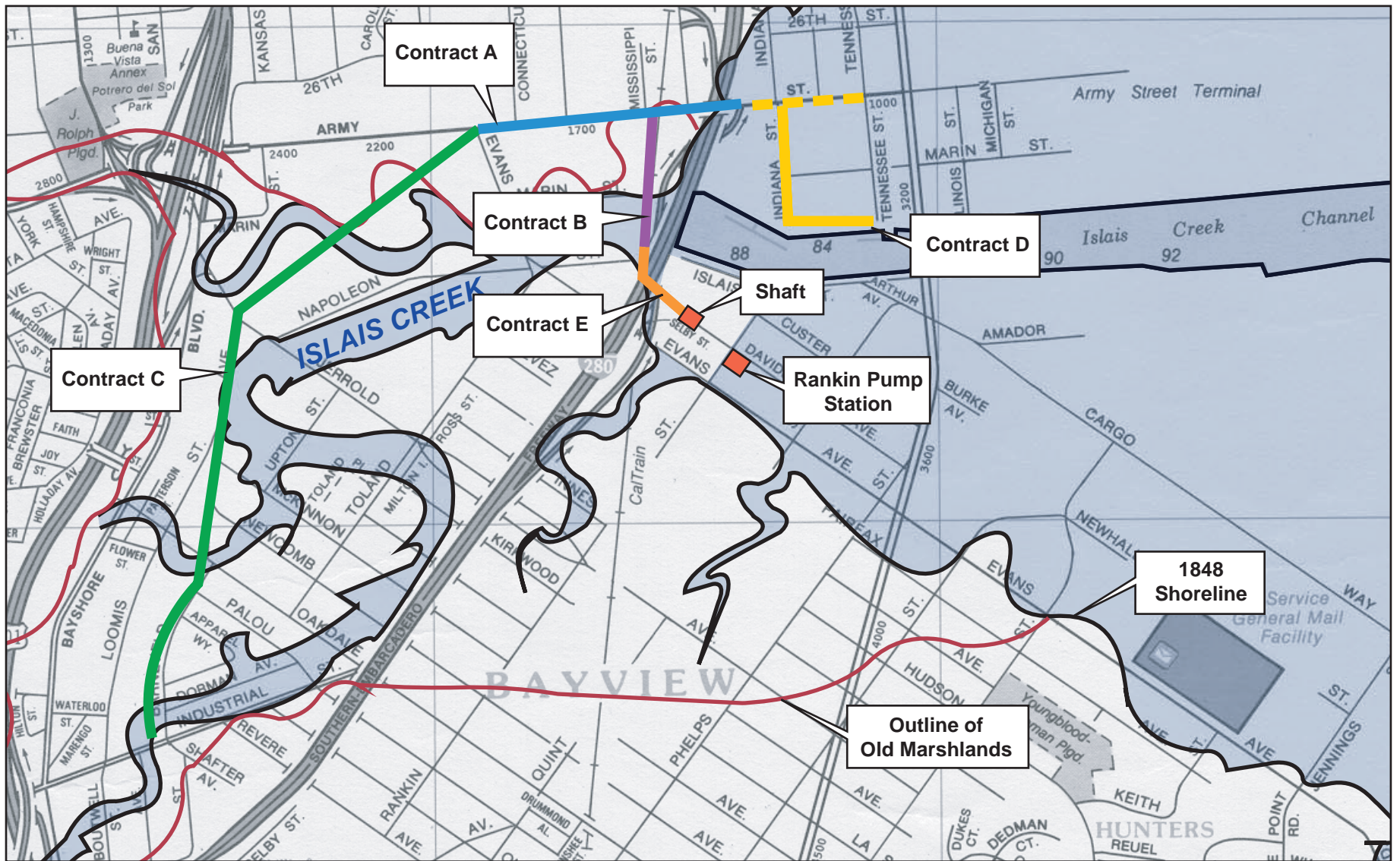


# Excavations



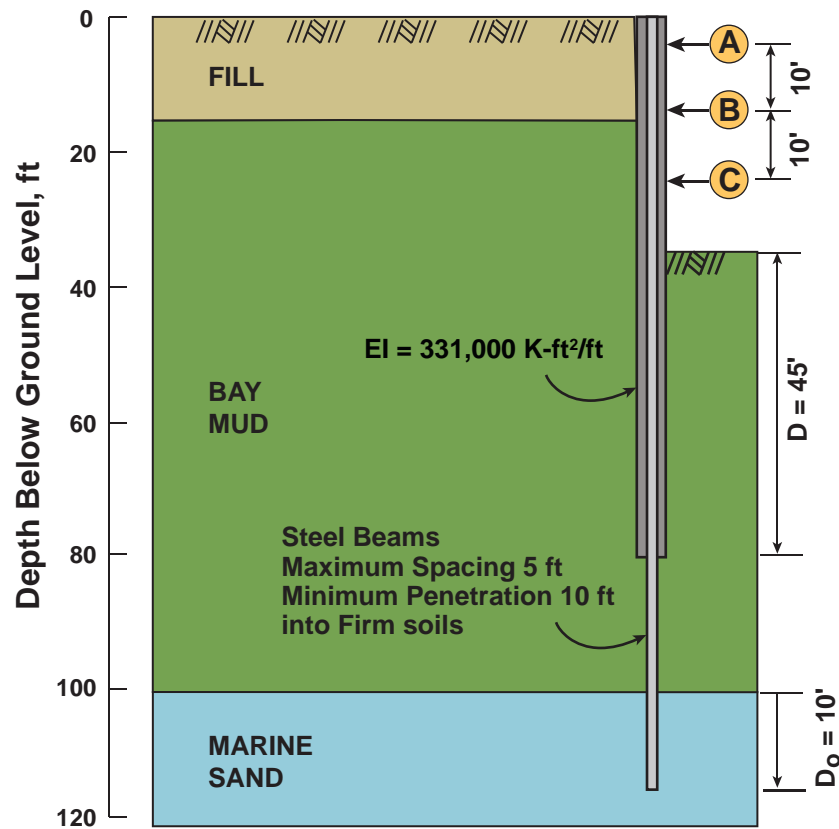
**FIG\_231: Excavation Projects in Islais Creek Area**



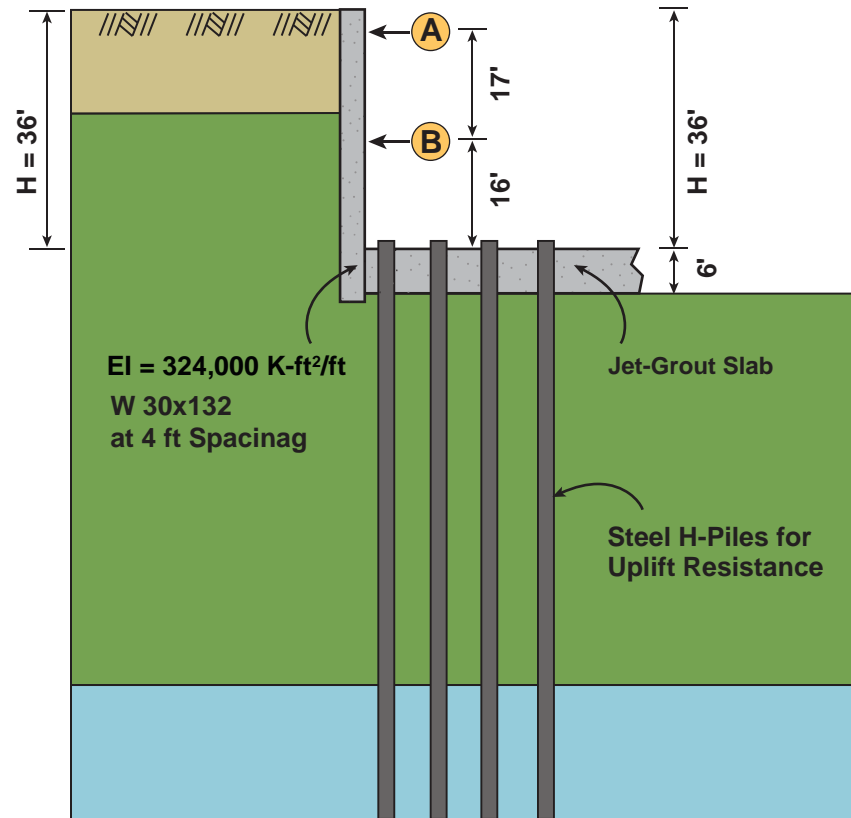
FIG\_232: Excavation Projects in Islais Creek Area



**FIG\_233: Excavations in the Islais Creek Channel Area**

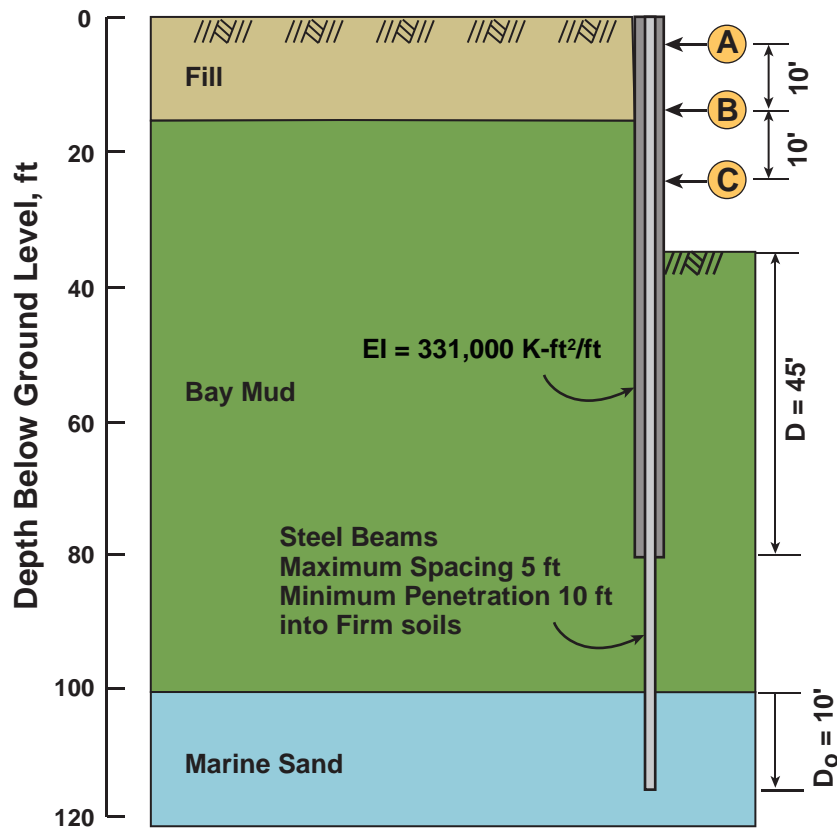


Conventional Stiff Shoring System

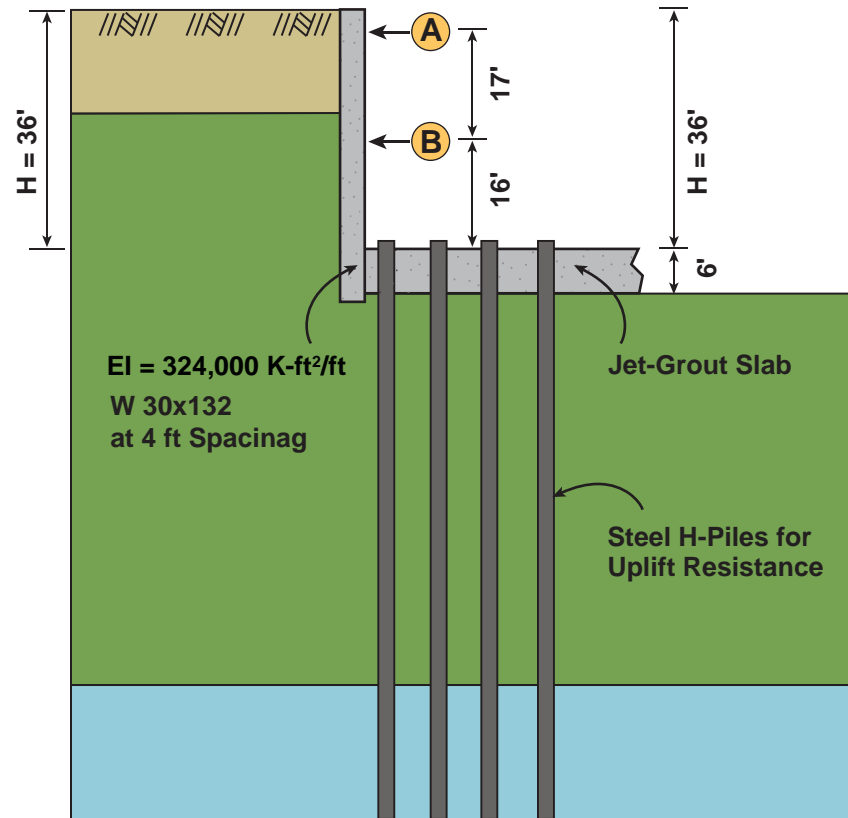


New Shoring Concept

FIG\_234: Islais Creek Contract D Excavations: Use of Soil Cement and Jet Grouted Strut for Shoring

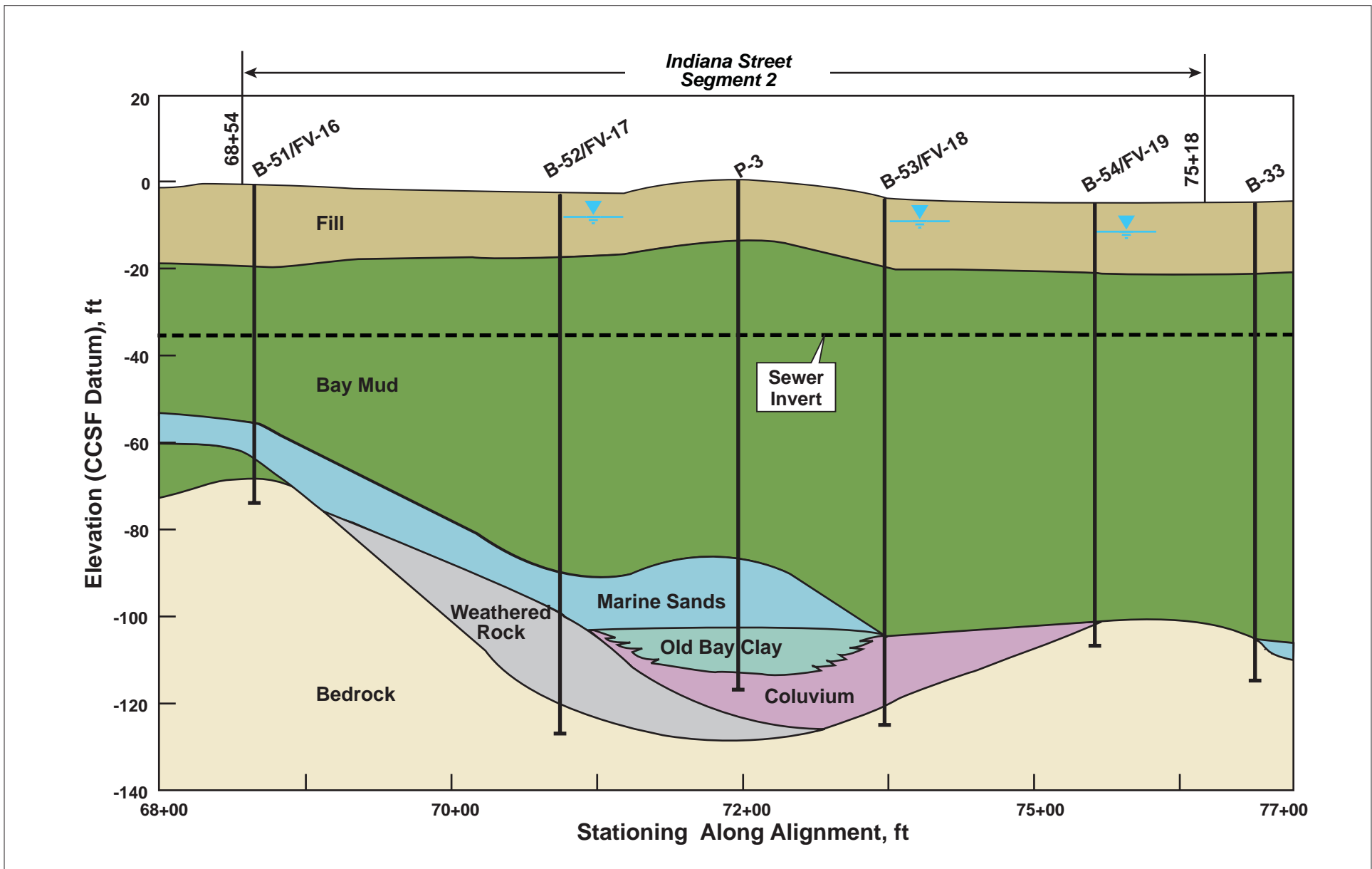


Conventional Stiff Shoring System



New Shoring Concept

FIG\_234: Islais Creek Contract D Excavations: Use of Soil Cement and Jet Grouted Strut for Shoring



FIG\_235: Subsurface Stratigraphy at Islais Creek Contract D Segment 2: Indiana Street

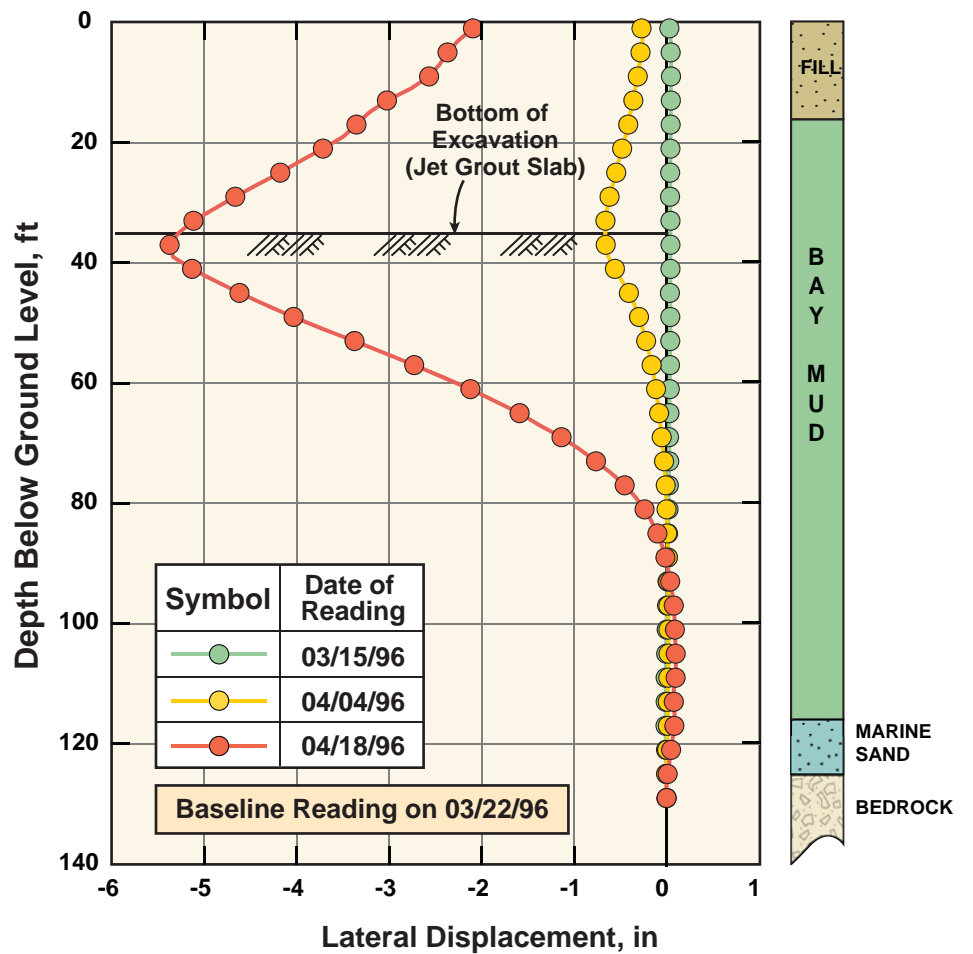
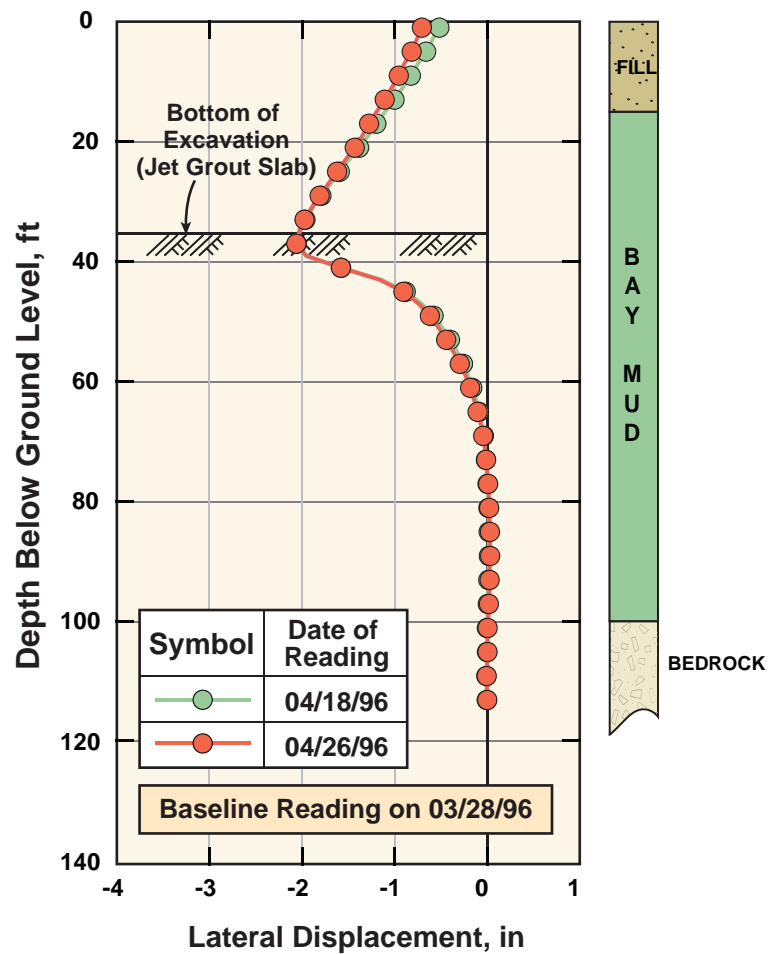
W:\Infrastructure\Geotech\UC Berkeley 2008 Seminar\Final Figures\11 EXCAVATION (230-266)\FIG\_235



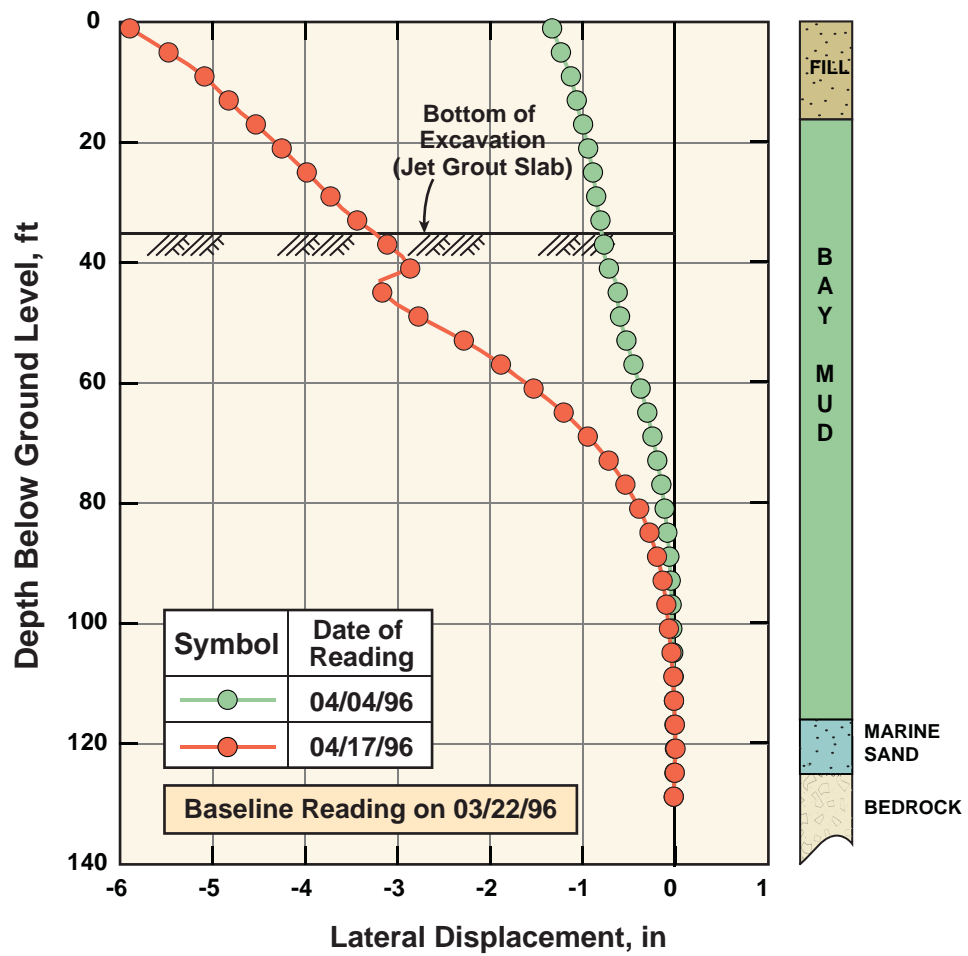
**FIG\_236: View of Completed Excavation: Islais Creek Contract D**

W:\Infrastructure\Geotech\UC Berkeley 2008 Seminar\Final Figures\11 EXCAVATION (230-266)\FIG\_236

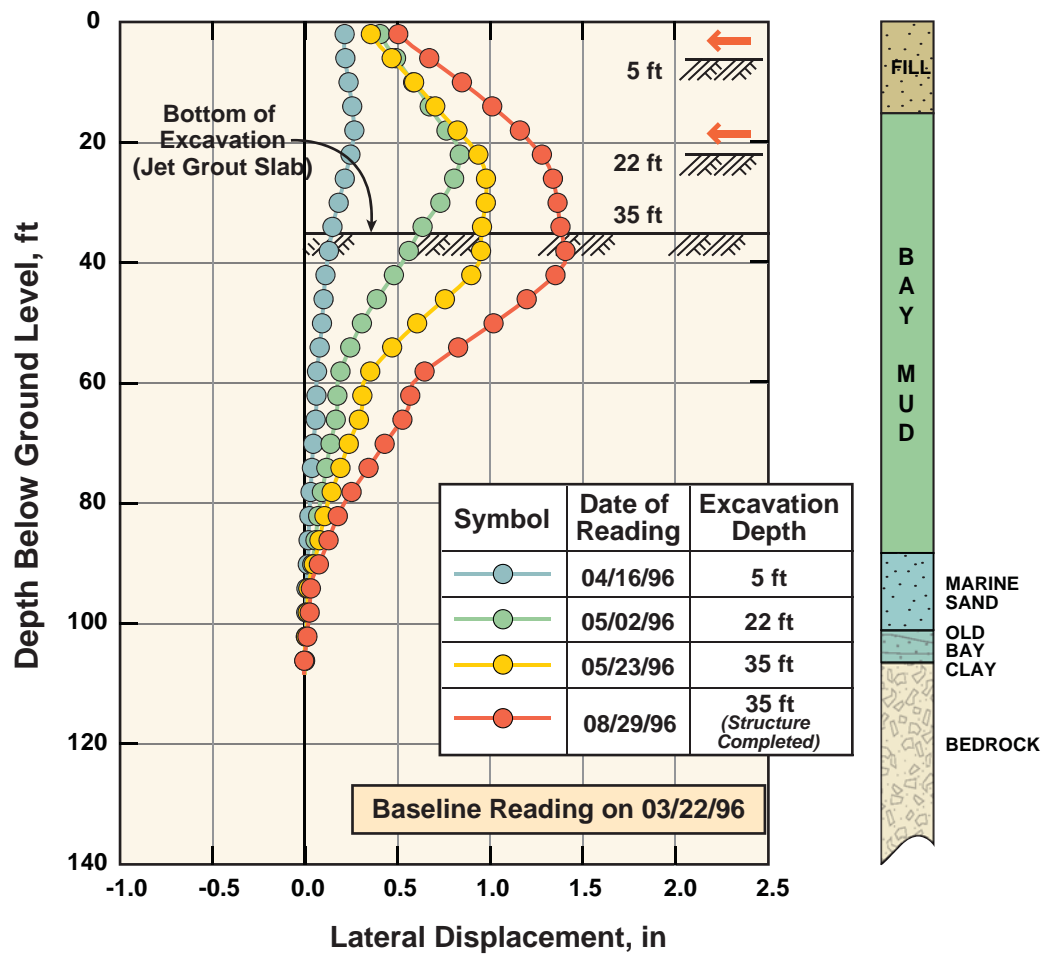




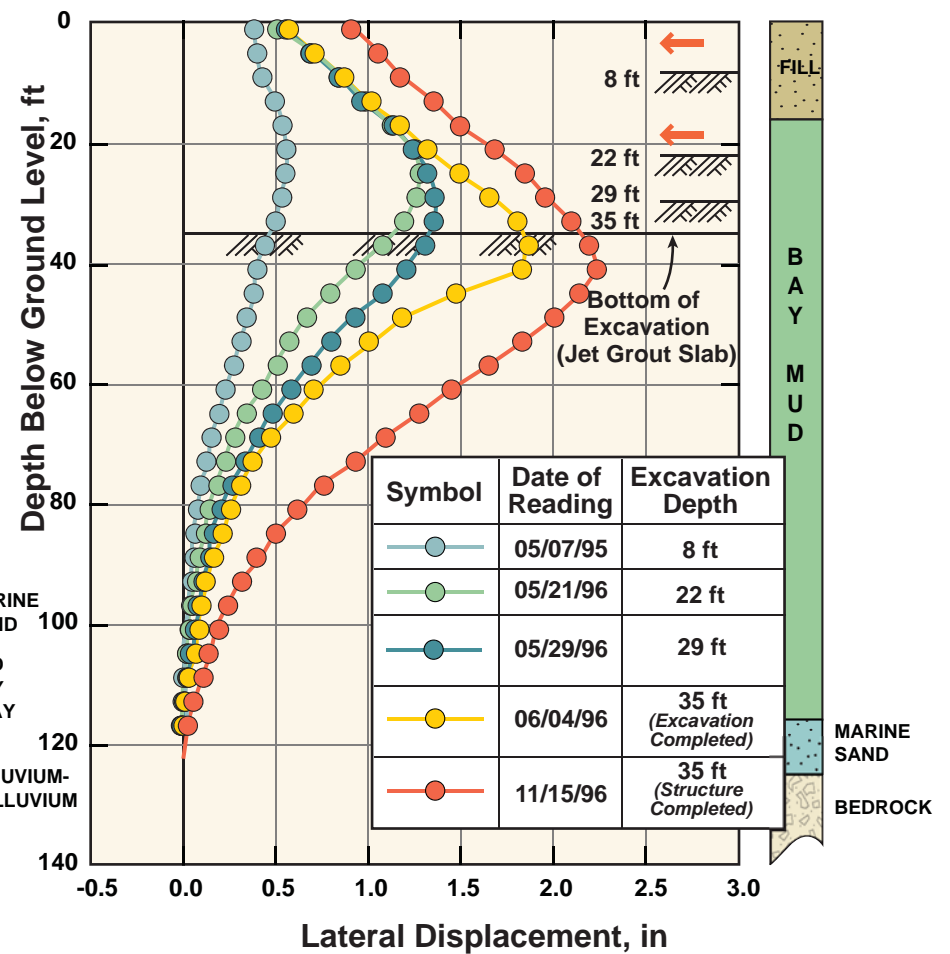
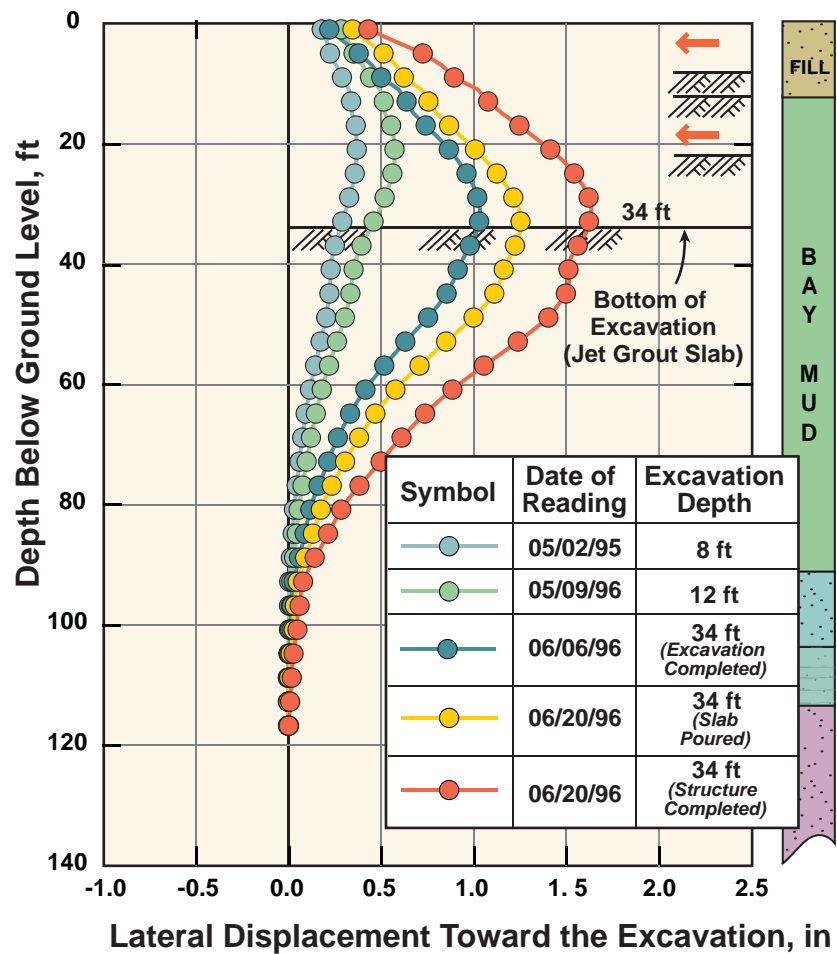
FIG\_237 : Lateral Deformations Caused by Jet Grouting: Islais Creek Contract D



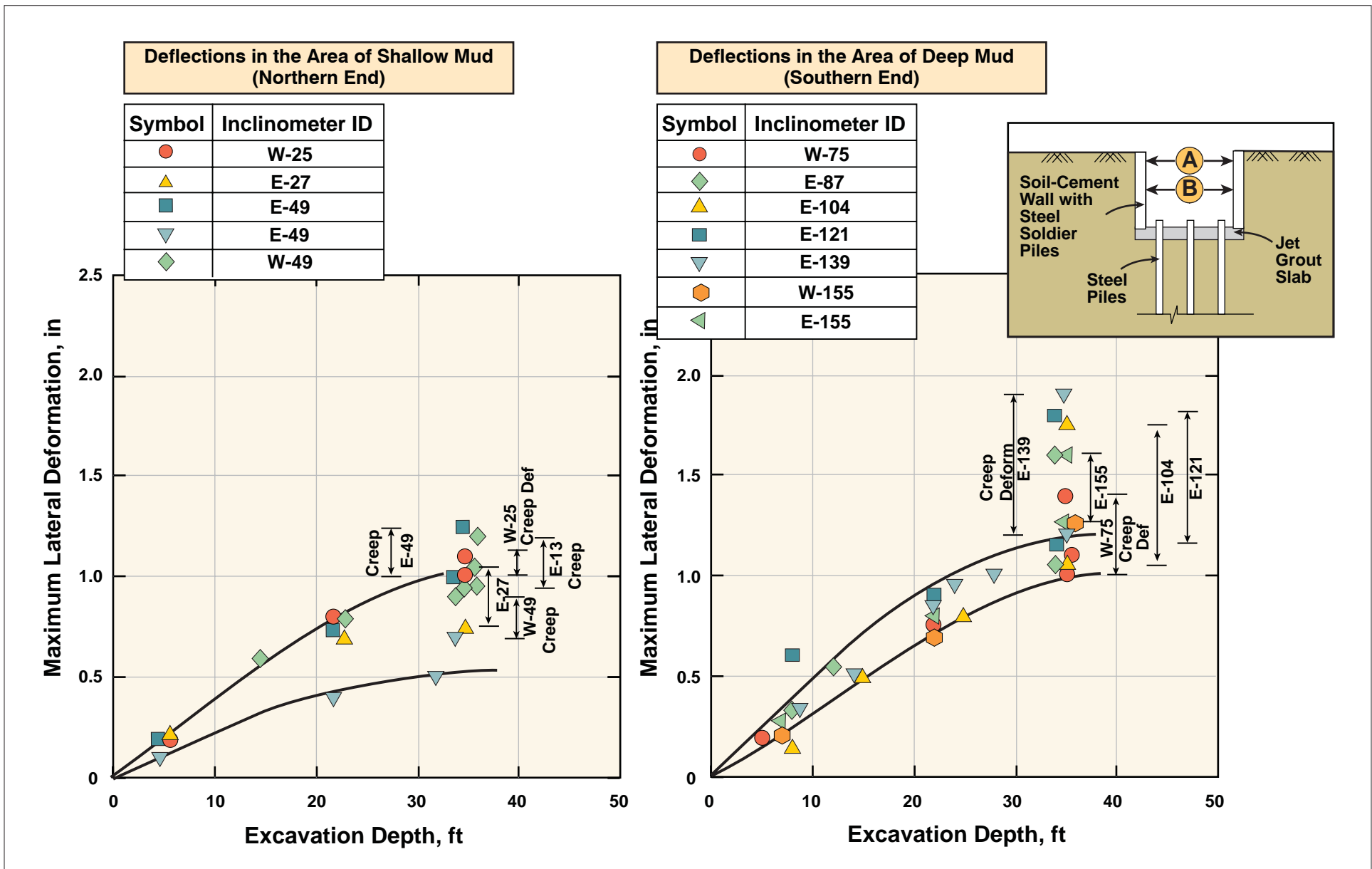
FIG\_238: Lateral Deformations Caused by Jet Grouting: Islais Creek Contract D - Inclinerometers Along Channel



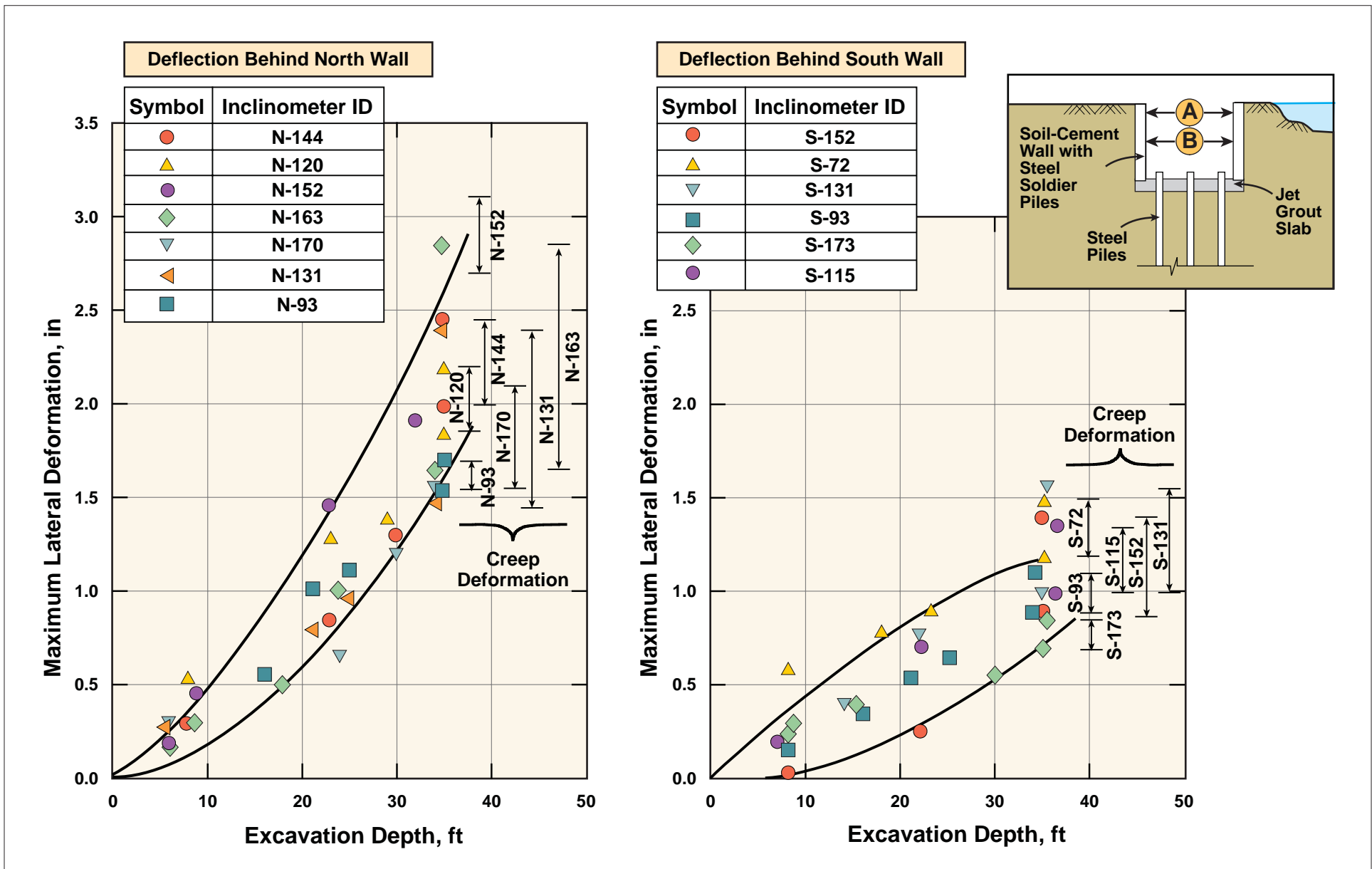
FIG\_239: Lateral Deformations Caused by Jet-Grouting and Excavation: Islais Creek Contract E



FIG\_240: Excavation-Induced Deformations: Islais Creek Contract D — Indiana Street Segment



FIG\_241: Lateral Deflections Versus Excavation Depth: Excavations Along Indiana Street: Islais Creek Contract D

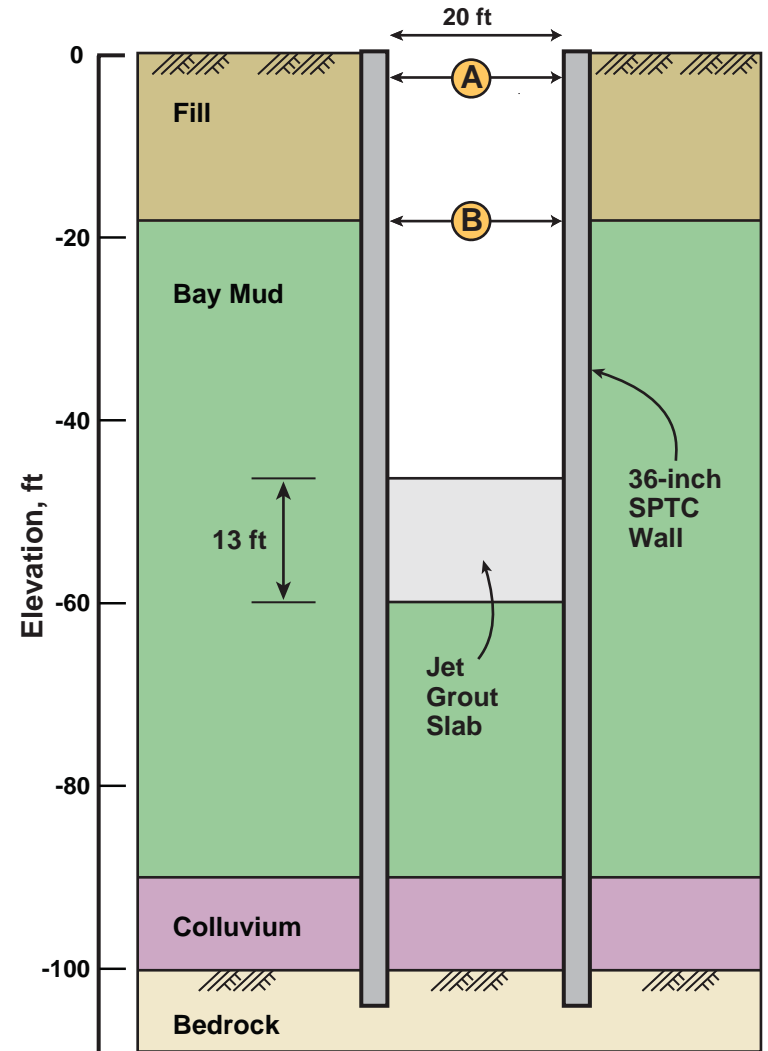
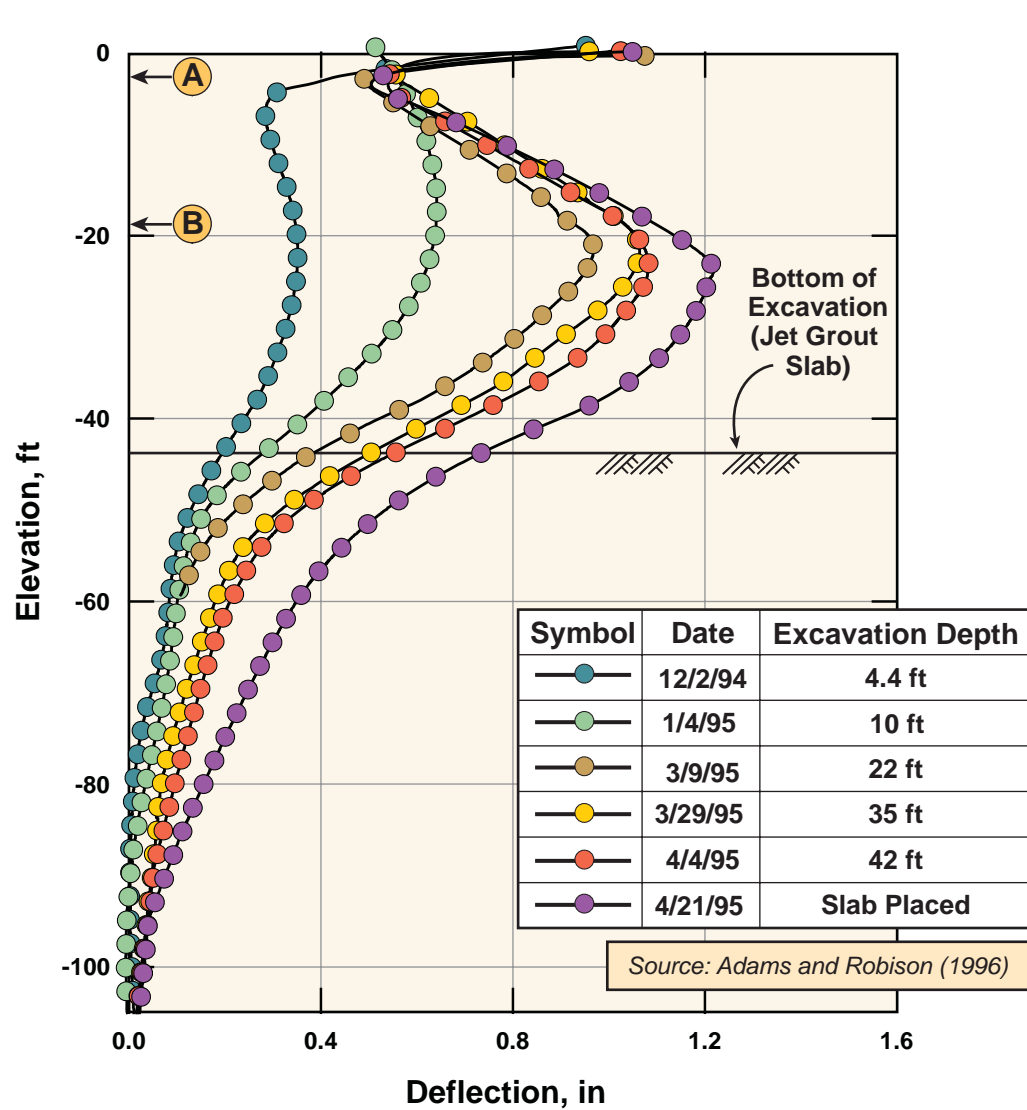


FIG\_242: Lateral Deflections Versus Excavation Depth: Overflow Structure Along Islais Creek



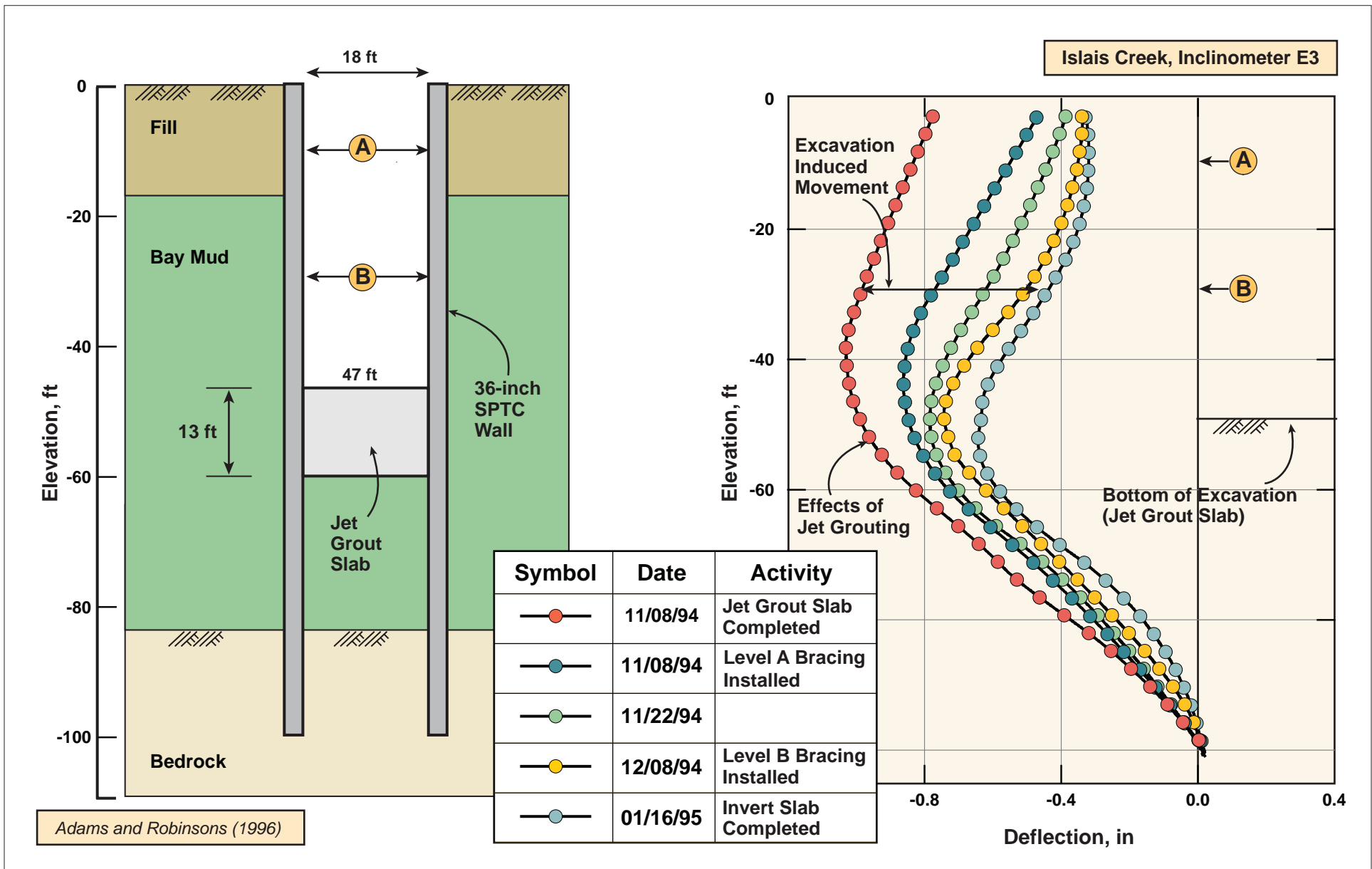
**FIG\_243: Restrutting of Box Structure - Islais Creek Contract D**

W:\Infrastructure\Geotech\UC Berkeley 2008 Seminar\Final Figures\11 EXCAVATION (230-266)\FIG\_243



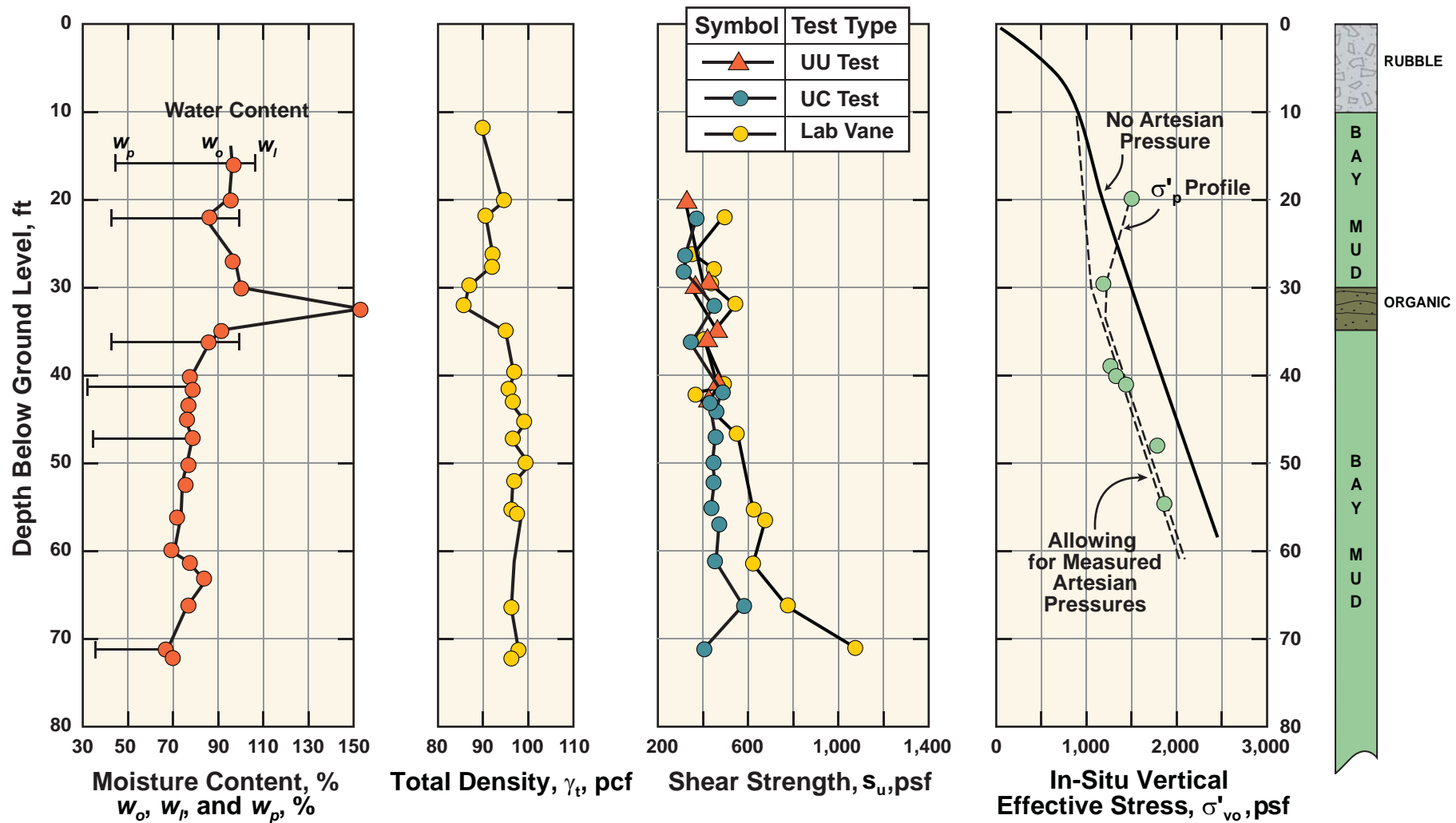
FIG\_244: Lateral Deformations Caused by Jet-Grouting and Excavation: Islais Creek Contract E





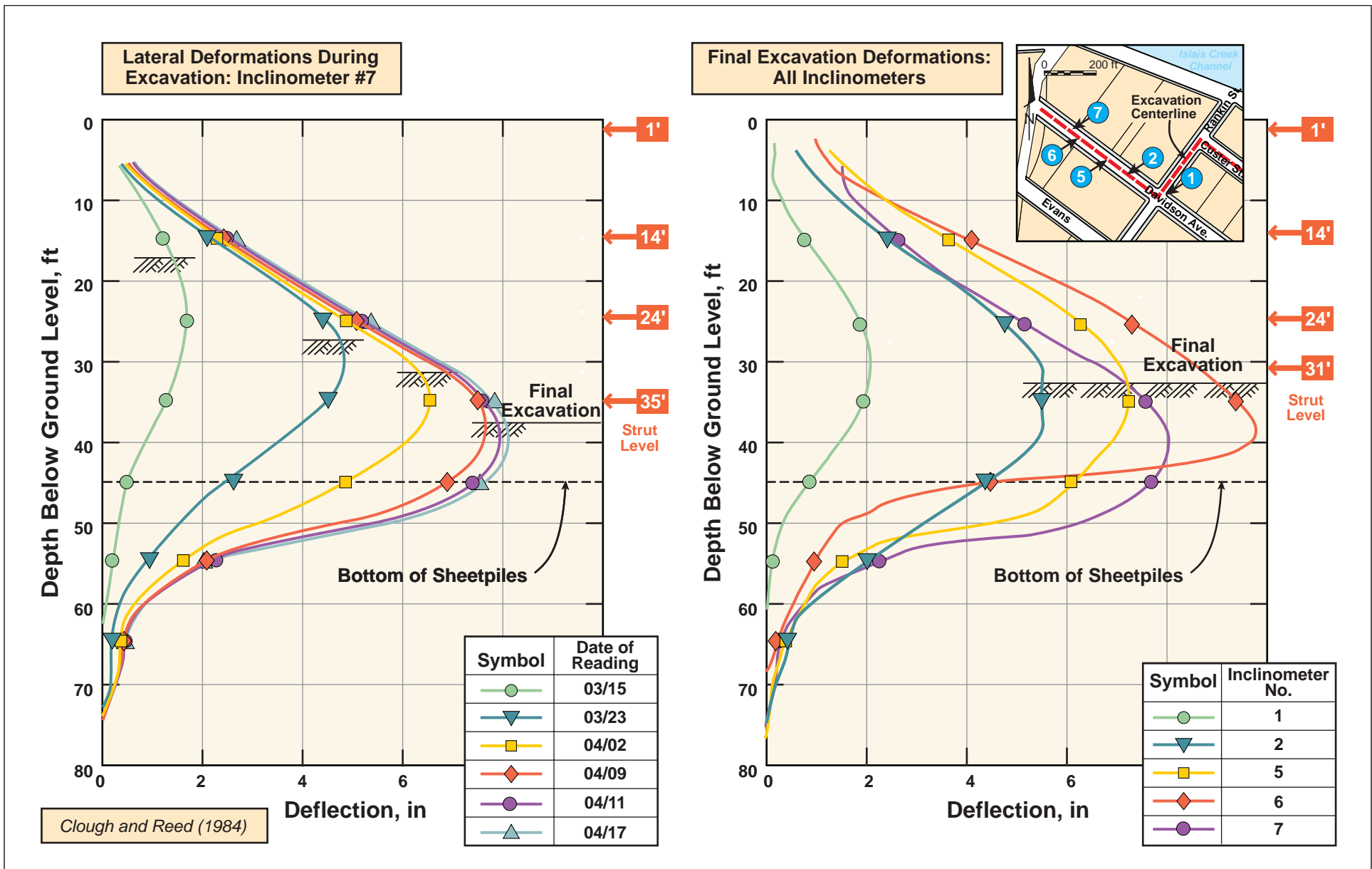
**FIG\_245: Islais Creek Contract E Lateral Deformations Caused by Jet Grouting and Excavation**

W:\Infrastructure\Geotech\UC Berkeley 2008 Seminar\Final Figures\11 EXCAVATION\FIG\_239.ai

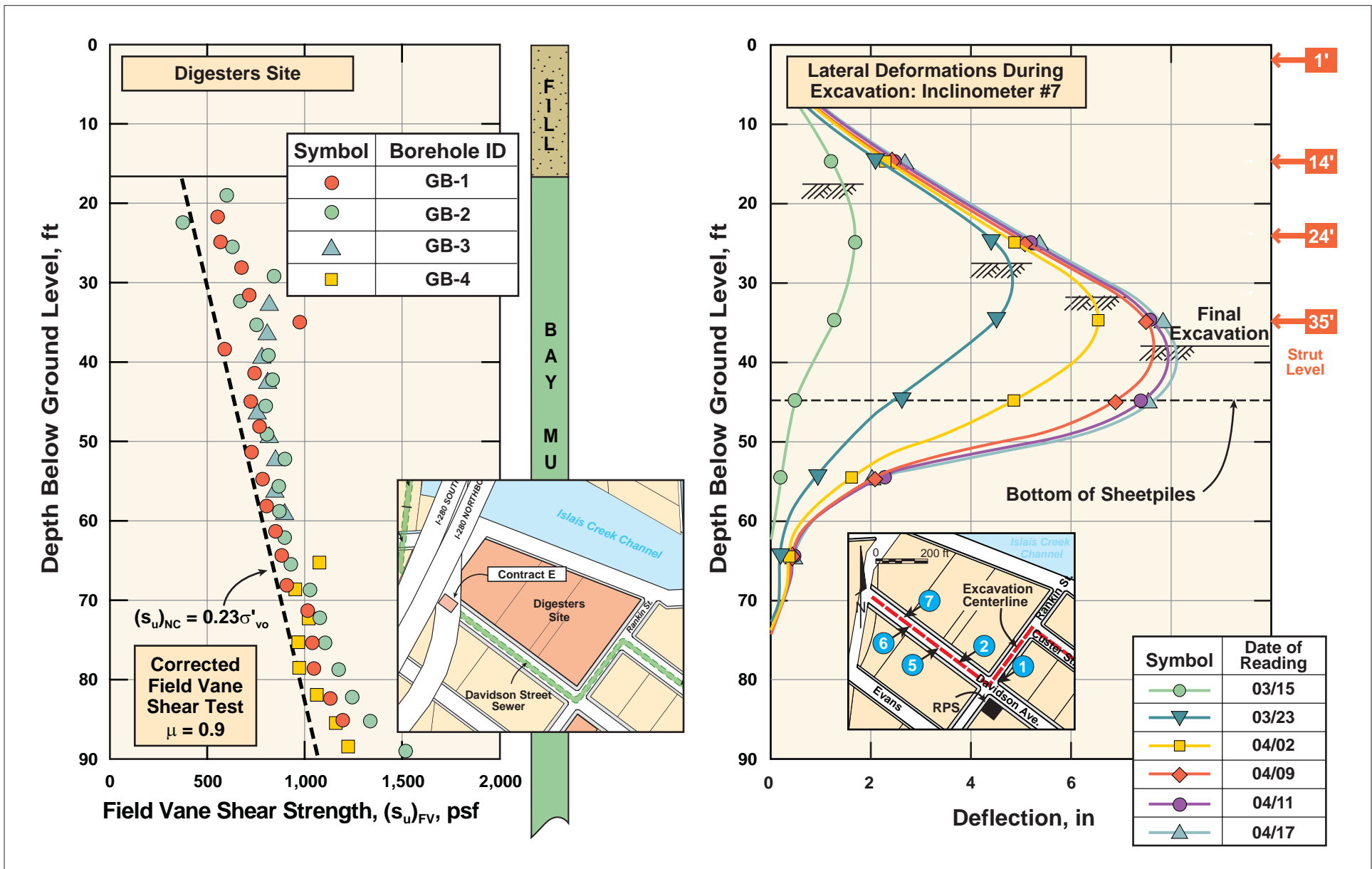


Clough and Reed (1984)

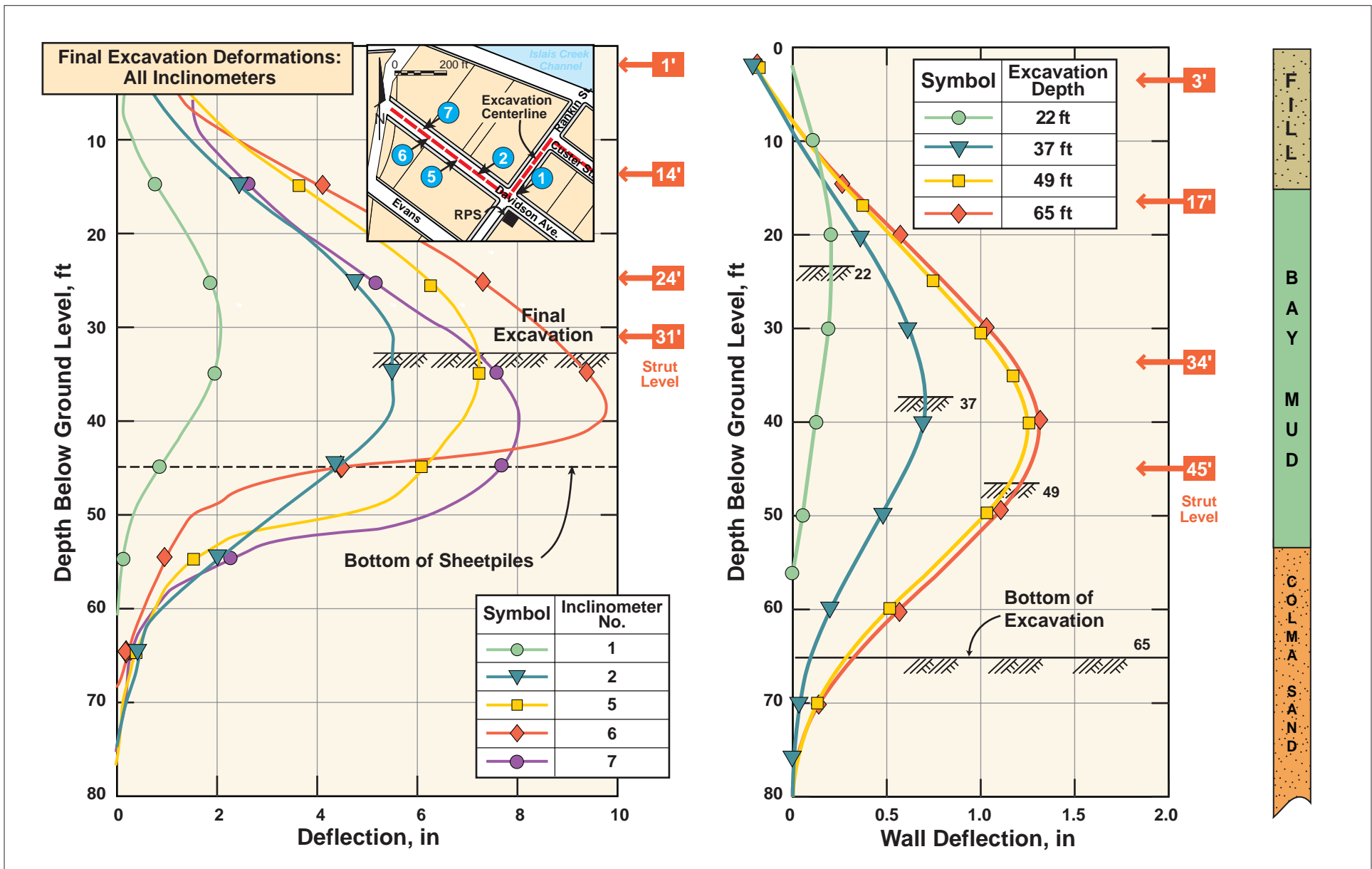
FIG\_246: Subsurface Conditions and Soil Properties: Davidson Street Sewer (Clough and Reed, 1984)



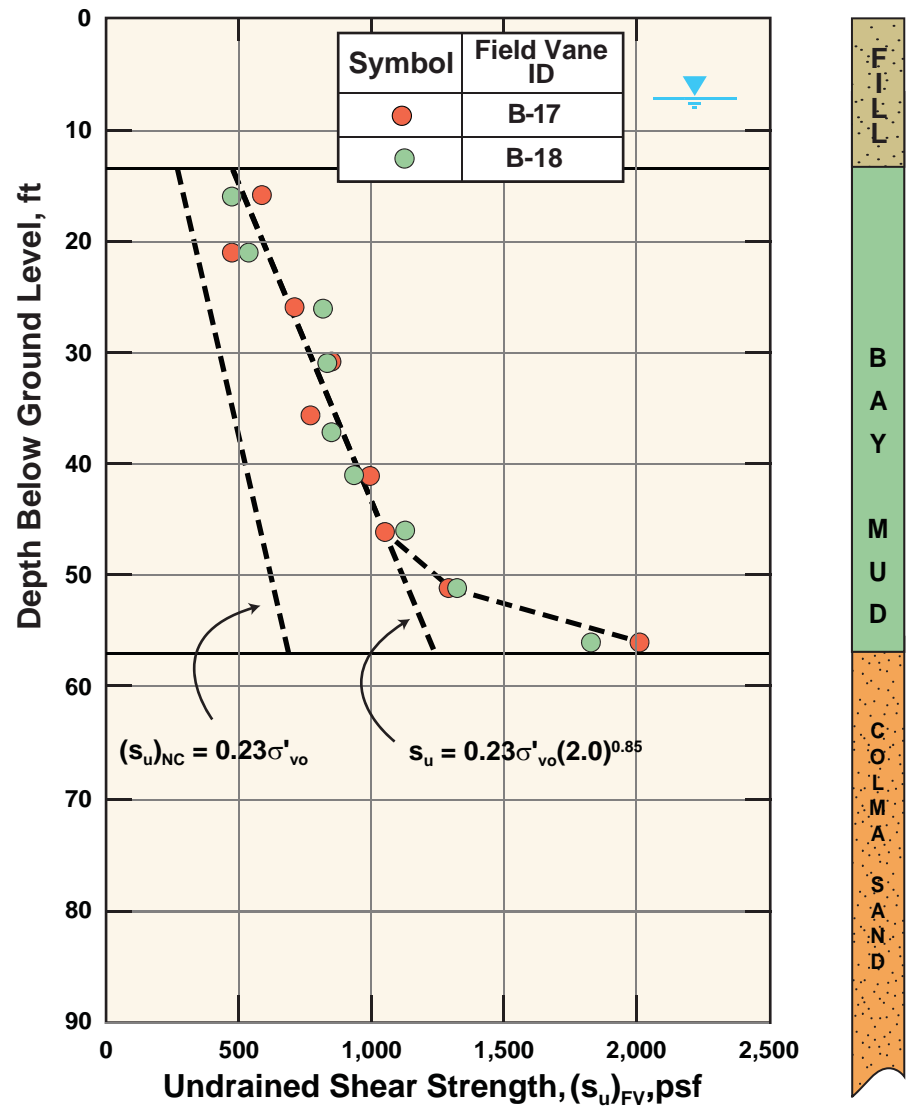
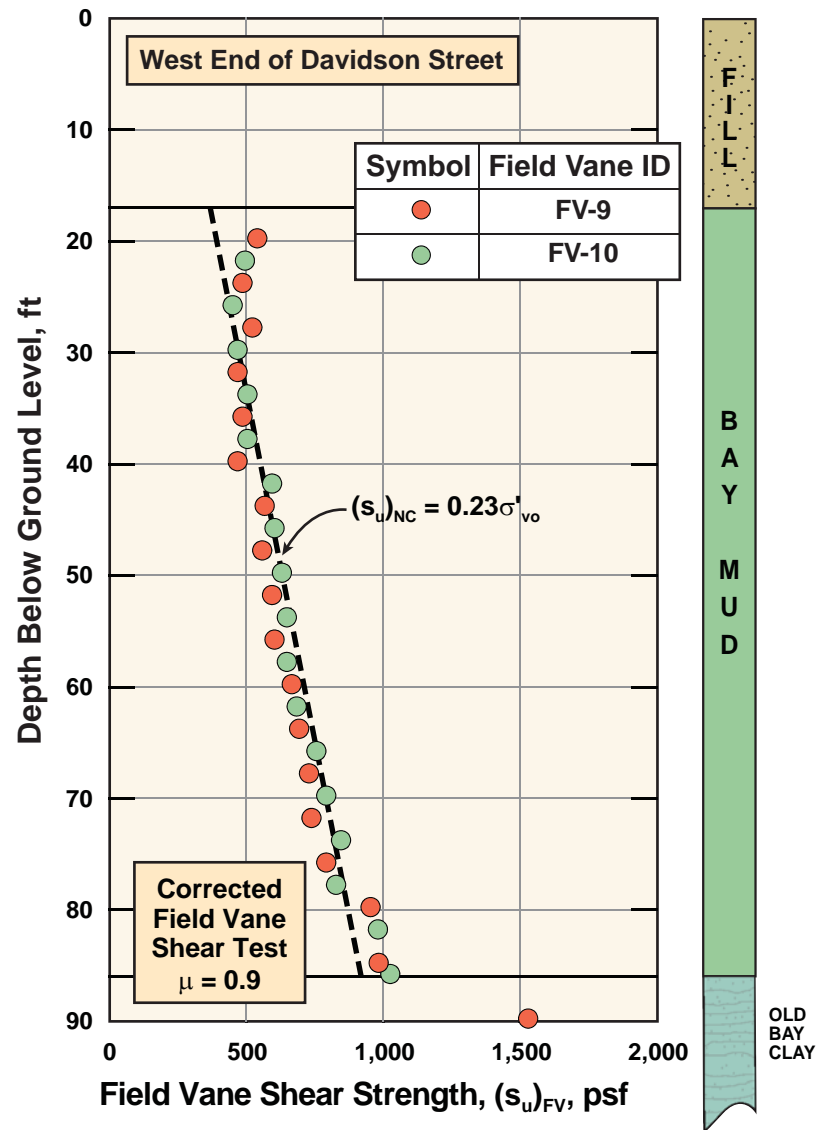
FIG\_247: Excavation Deformations: Davidson Street Sewer  
 W:\Infrastructure\Geotech\UC Berkeley 2008 Seminar\Final Figures\11 EXCAVATION (230-266)\Fig\_247



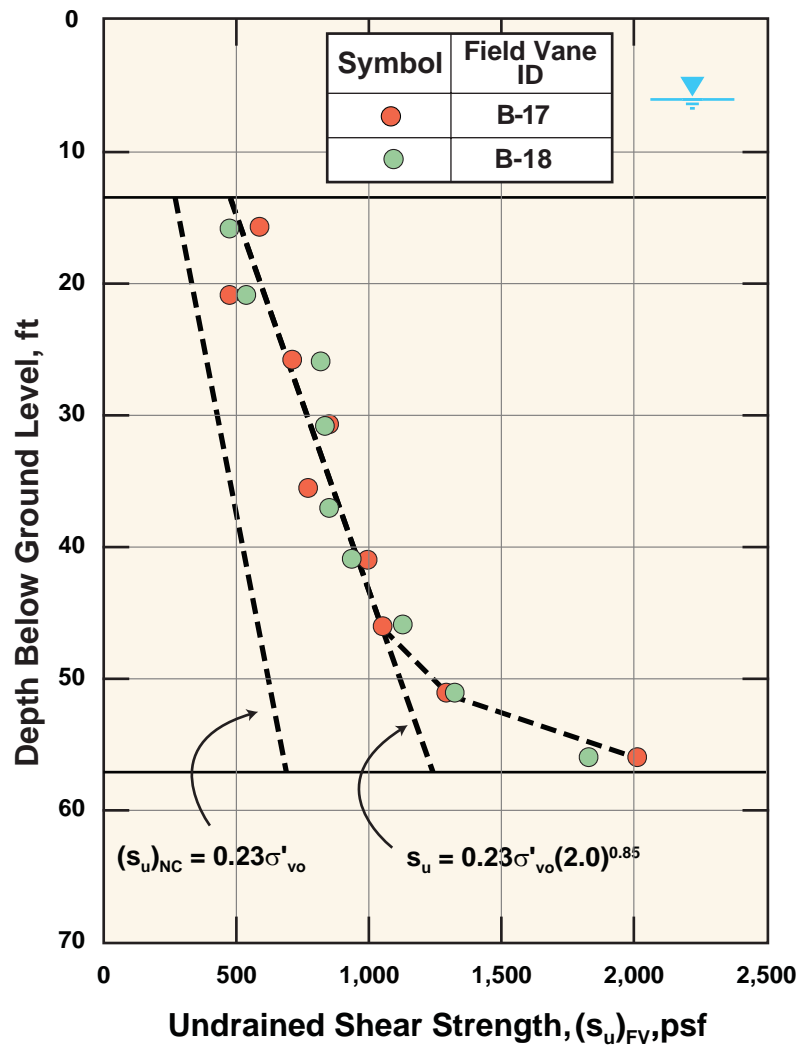
FIG\_247A: Excavation Deformations: Davidson Street Sewer  
 W:\Infrastructure\Geotech\UC Berkeley 2008 Seminar\Final Figures\11 EXCAVATION (230-266)\Fig\_247A



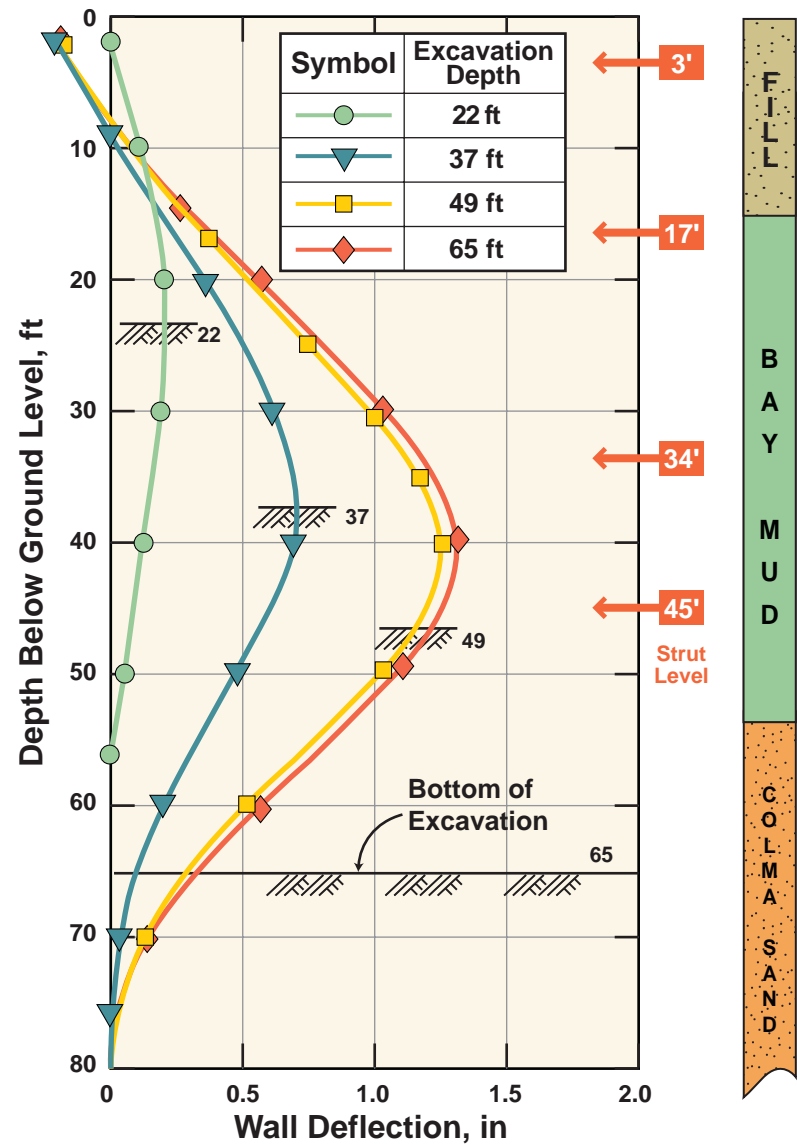
FIG\_247B: Excavation Deformations: Davidson Street Sewer and Ranking Pump Station



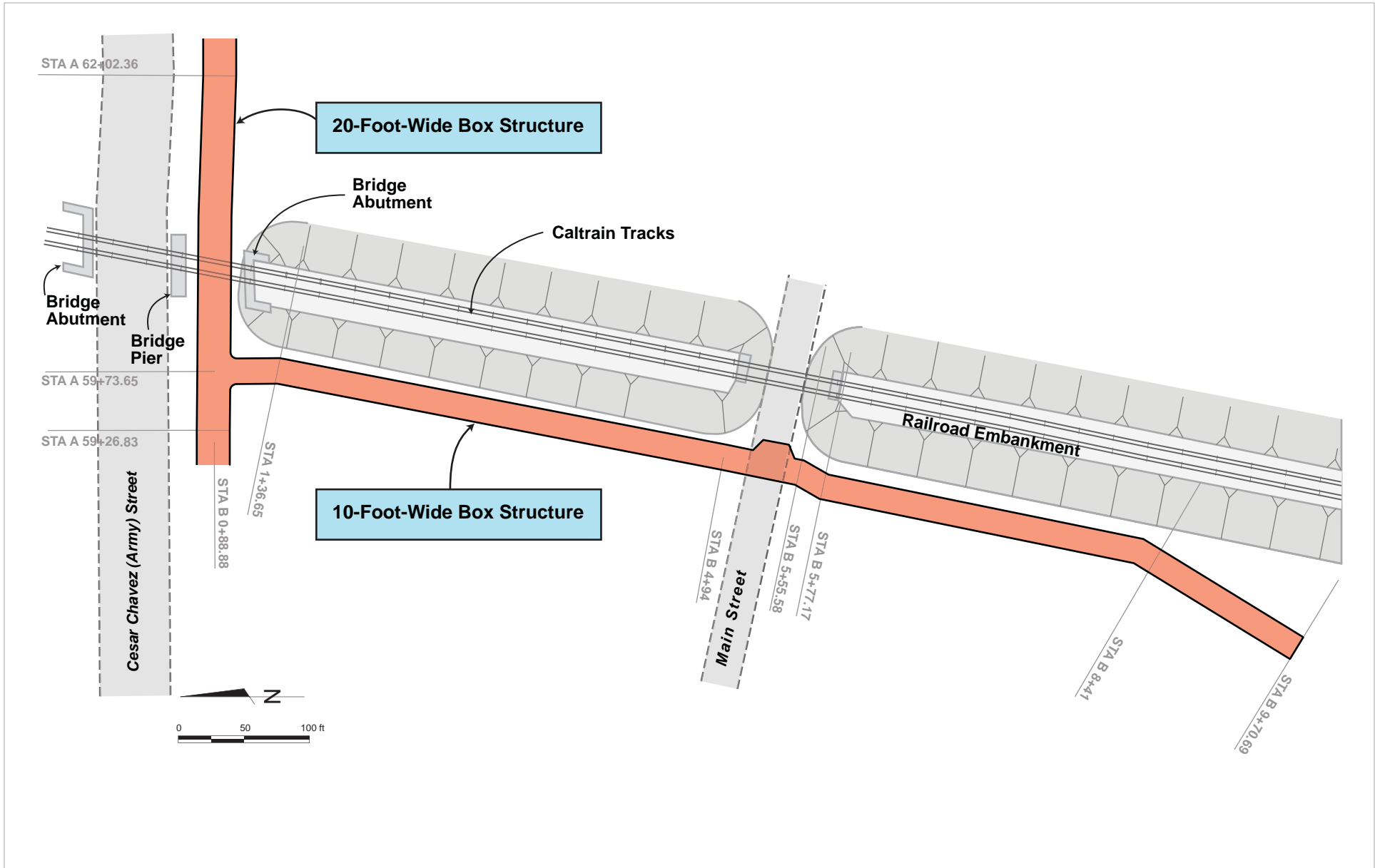
FIG\_248: Undrained Shear Strengths From Vane Shear Tests: Rankin Pump Station Site, Islais Creek Estuary



Berti, Singh, and Chia (1995)

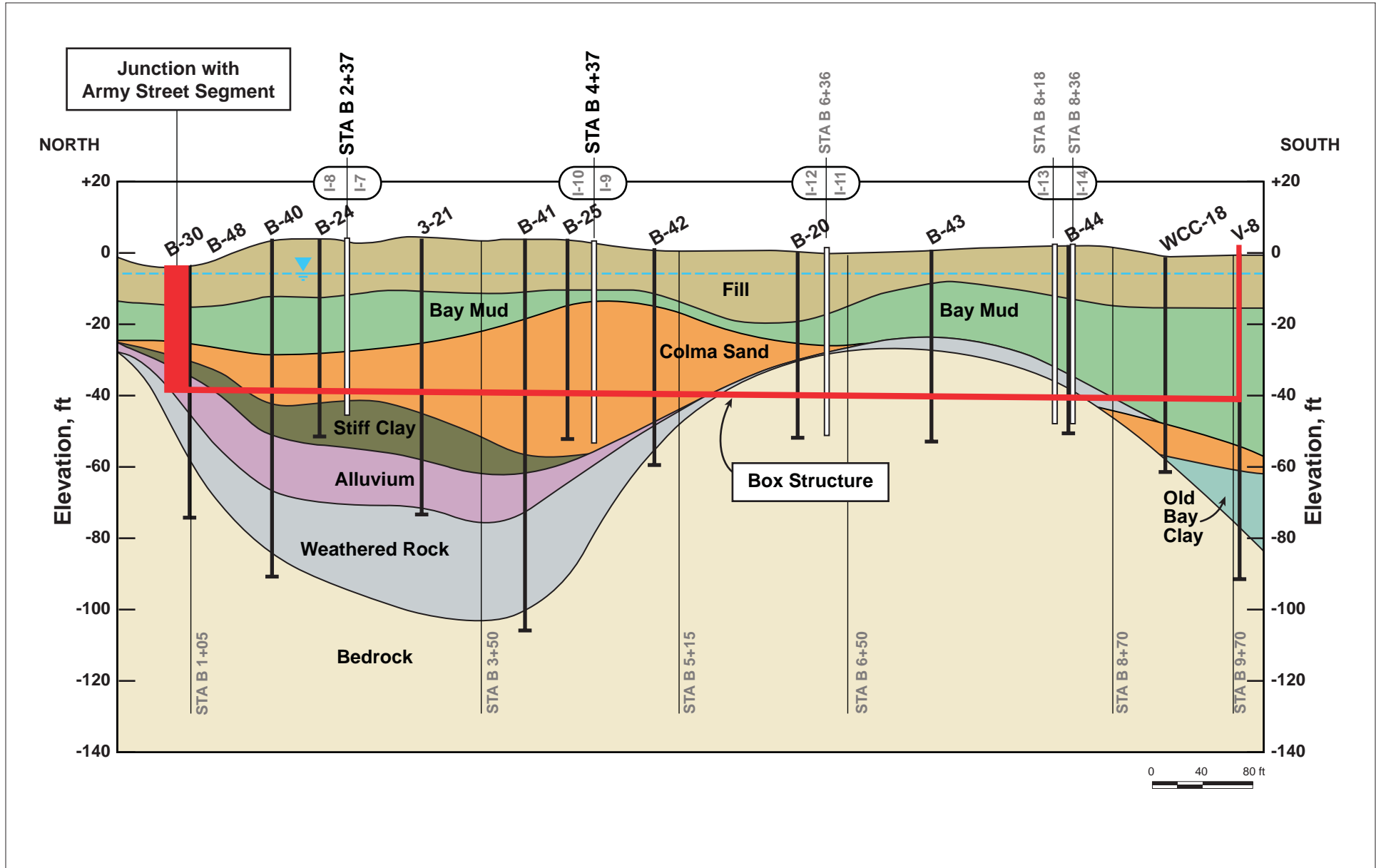


FIG\_249: Bay Mud Strengths and Excavation Deformations: Rankin Pump Station

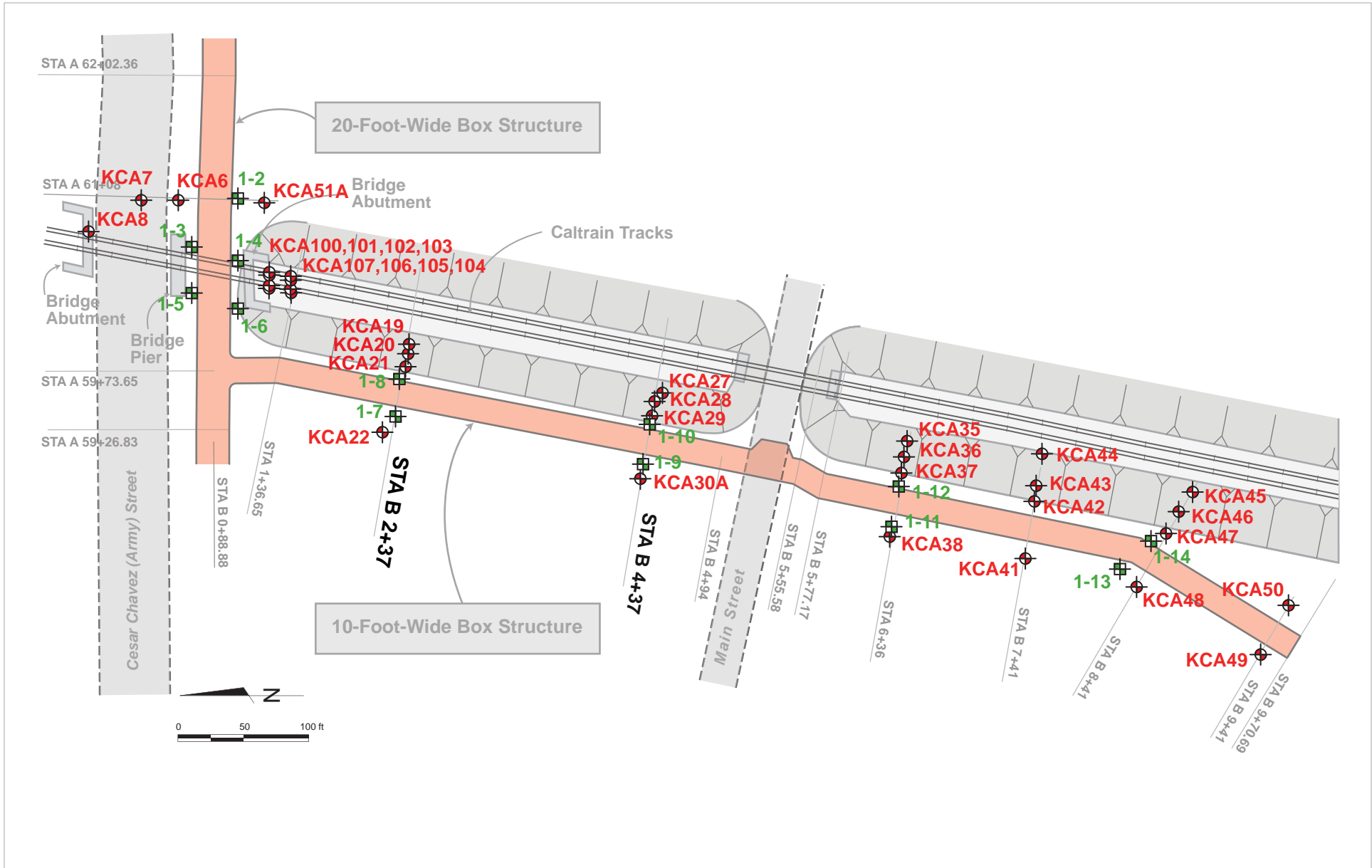


FIG\_250: Excavation Alignment: Islais Creek Contract B

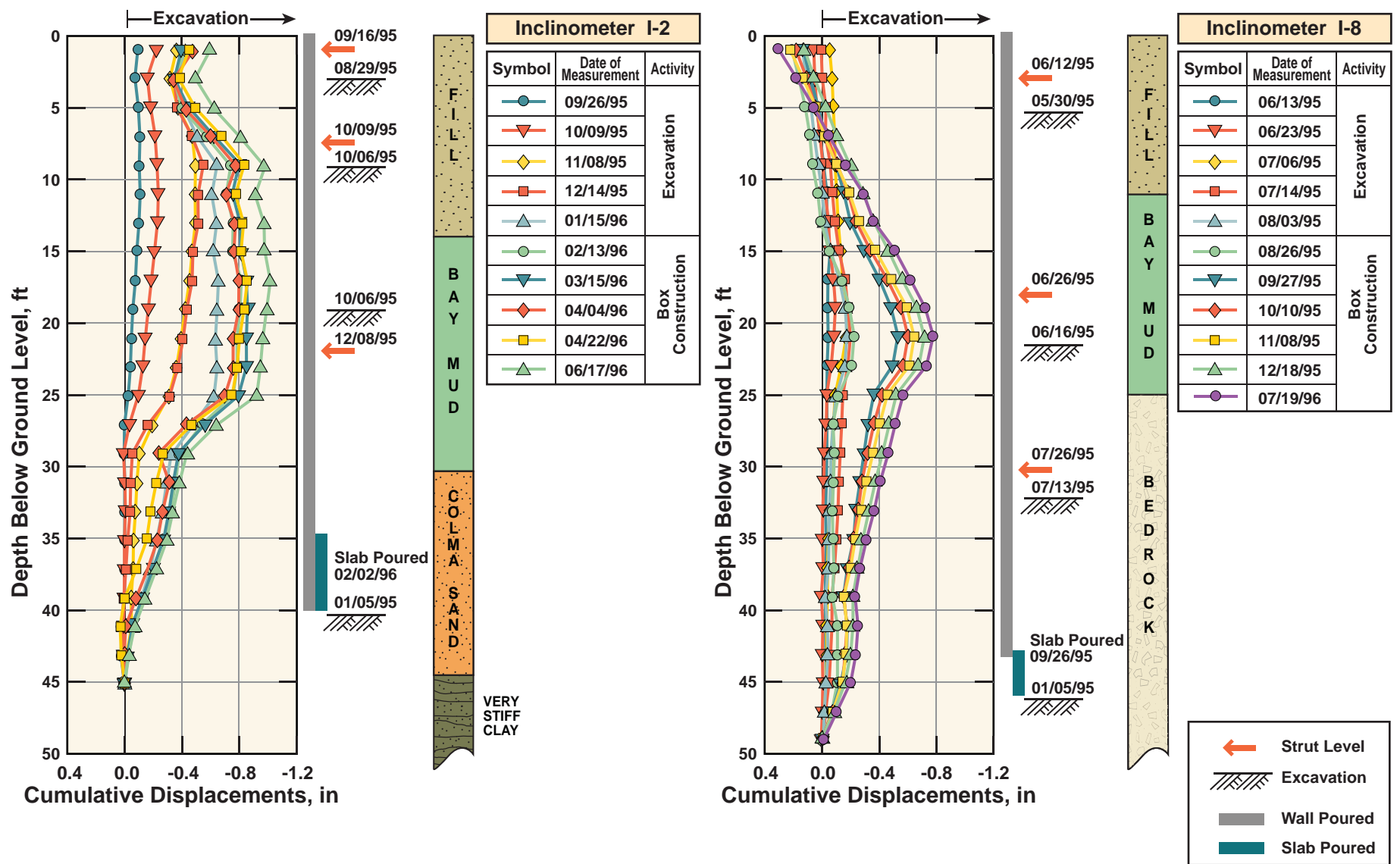




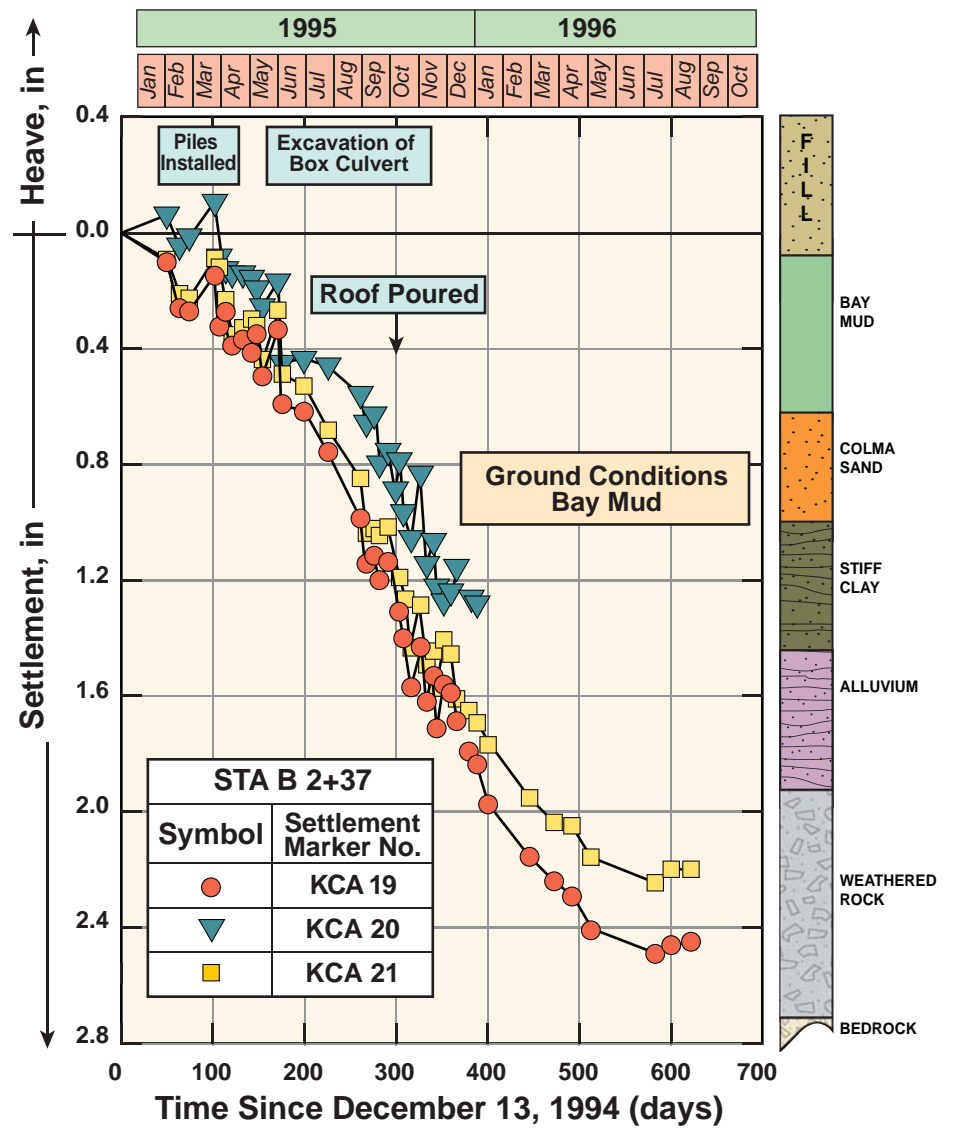
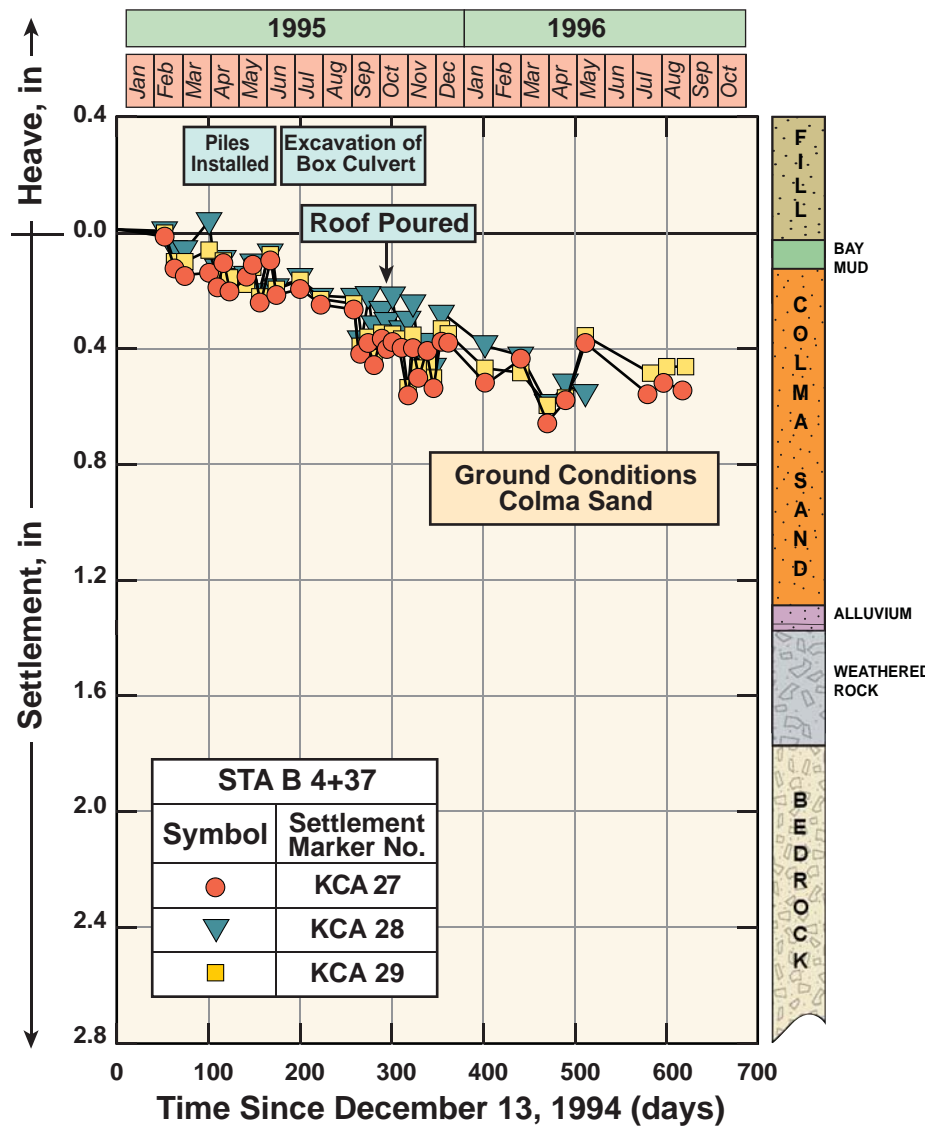
FIG\_251: Subsurface Stratigraphy: Islais Creek Contract D, Caltrain Corridor



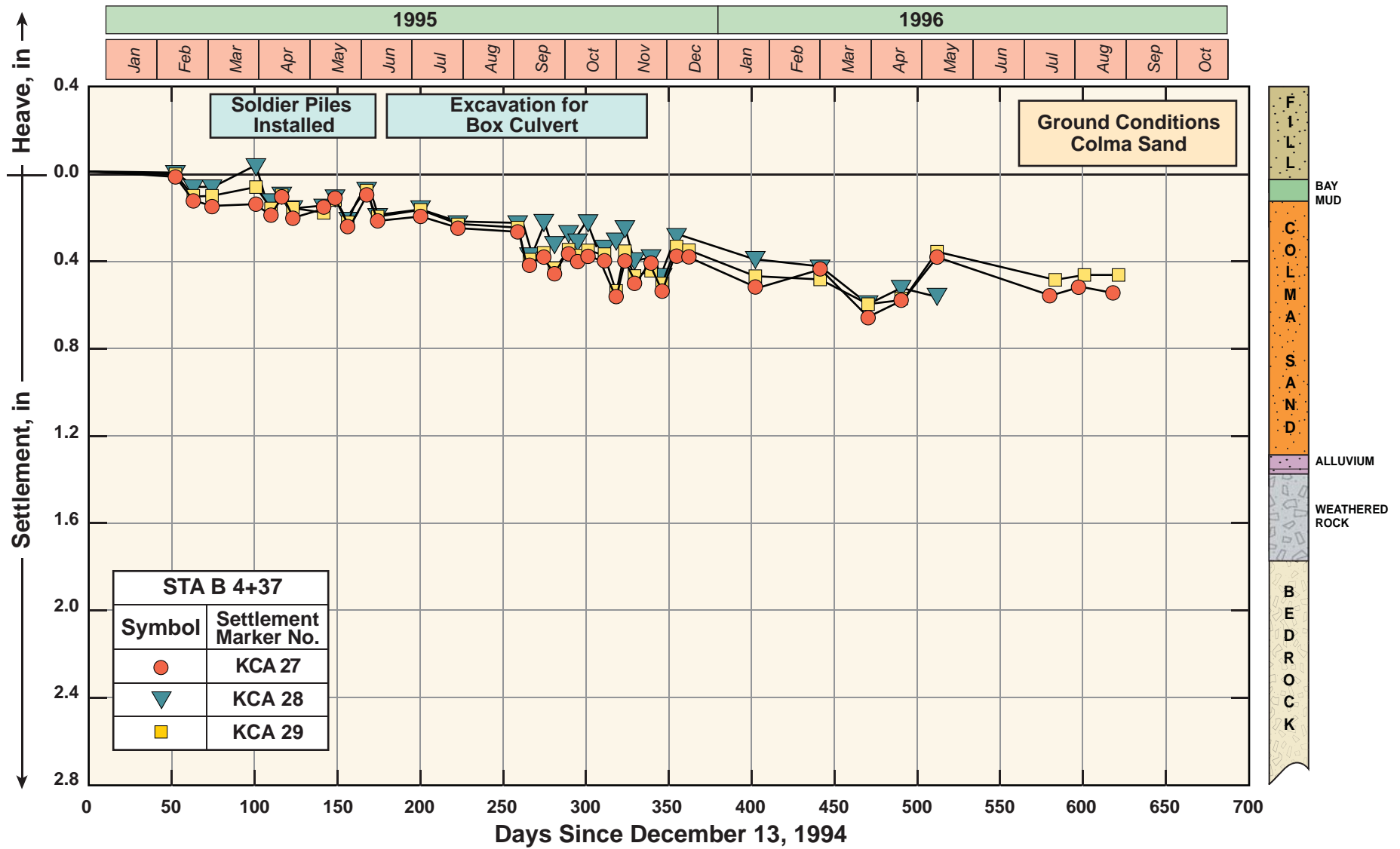
FIG\_252: Instrumentation Plan: Islais Creek Contract B



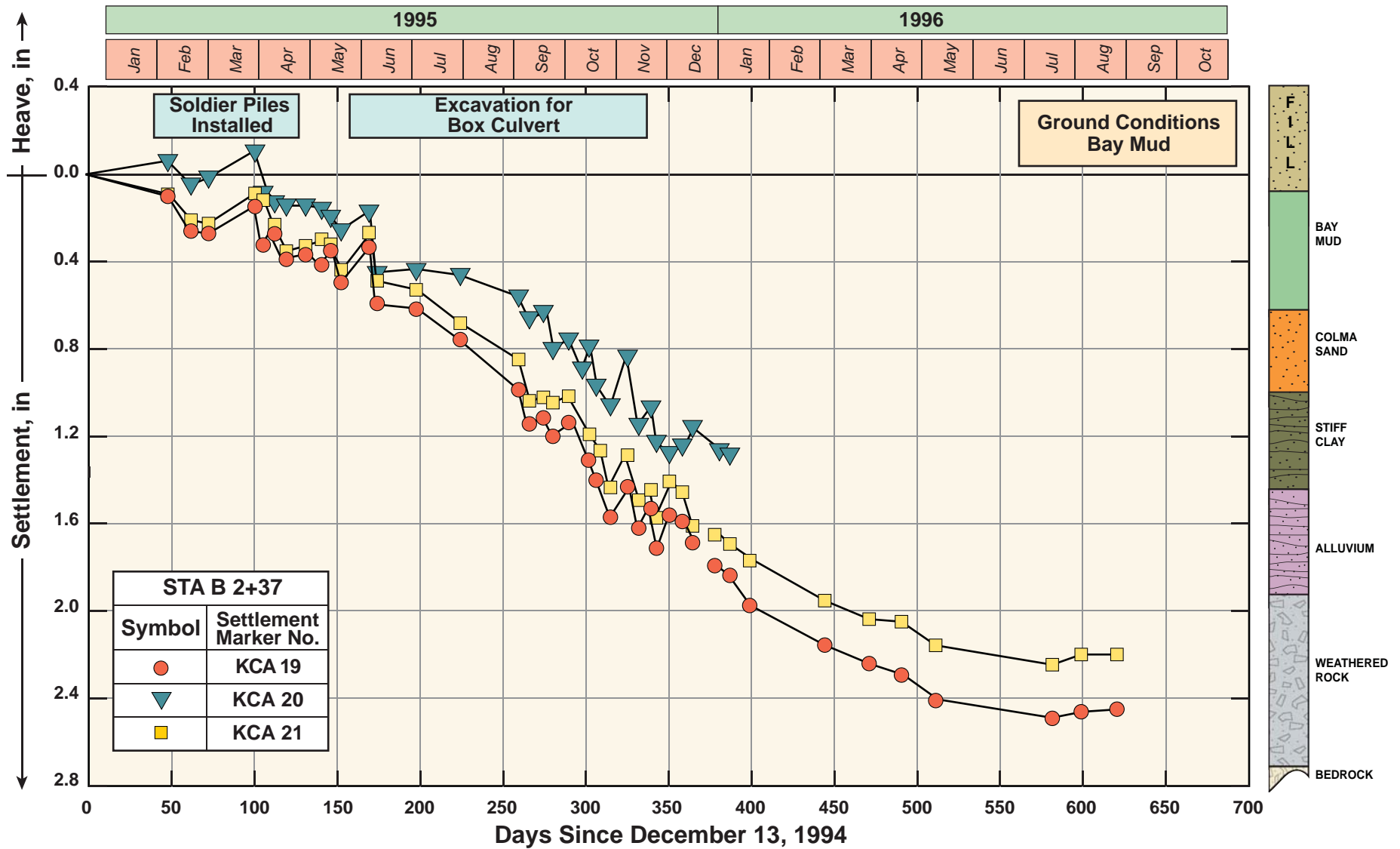
FIG\_253: Lateral Deformations Caused by Excavation and Box Construction: Islais Creek Contract B



FIG\_254: Settlements Versus Time Measurement in the Area Between Marin and Army Streets



FIG\_254A: Settlements Versus Time: Islais Creek Contract B  
 W:\Infrastructure\Geotech\UC Berkeley 2008 Seminar\Final Figures\11 EXCAVATION (230-266)\FIG\_254A



FIG\_254B: Settlements Versus Time: Islais Creek Contract B

W:\Infrastructure\Geotech\UC Berkeley 2008 Seminar\Final Figures\11 EXCAVATION (230-266)\FIG\_254B



**FIG\_255: Title**



**FIG\_256: Title**





**FIG\_257: Title**

W:\Infrastructure\Geotech\UC Berkeley 2008 Seminar\Final Figures\11 EXCAVATION (230-266)\FIG\_257



**FIG\_258: Title**

W:\Infrastructure\Geotech\UC Berkeley 2008 Seminar\Final Figures\11 EXCAVATION (230-266)\FIG\_258



**FIG\_259: Title**



**FIG\_260: Construction of Box Sewer: Islais Creek Contract B**

W:\Infrastructure\Geotech\UC Berkeley 2008 Seminar\Final Figures\11 EXCAVATION (230-266)\FIG\_260



**FIG\_261: Title**



**FIG\_262: Title**

W:\Infrastructure\Geotech\UC Berkeley 2008 Seminar\Final Figures\11 EXCAVATION (230-266)\FIG\_262



**FIG\_263: Construction of Box Sewer: Islais Creek Contract B**

W:\Infrastructure\Geotech\UC Berkeley 2008 Seminar\Final Figures\11 EXCAVATION (230-266)\FIG\_263



**FIG\_264: Title**





**FIG\_265: Title**



**FIG\_266: Title**